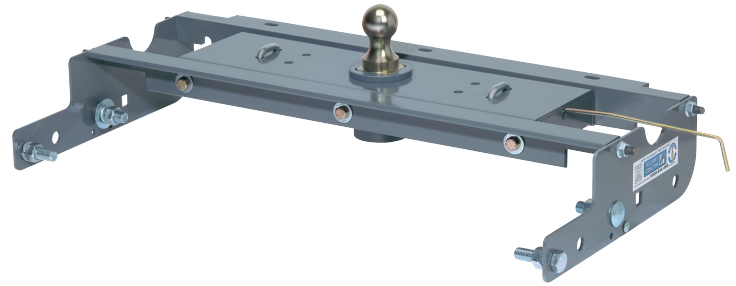




# B&W Turnover Ball



- 30,000 GTW/ 7,500 TW
- 2<sup>5</sup>/<sub>16</sub>" ball stores in-bed (unless noted)
- No bed removal required to install
- Limited Lifetime Warranty



<b>Application Chart</b> (NO Cab & Chassis trucks)	<b>Complete Kit</b>	<b>Price</b>	<b>Footnotes</b>
<b>Chevrolet/GMC Full Size Pickup,</b>			
88-98 1500 Long Bed	HGT1000	\$599.00	<b>c</b>
99-07 1500/2500 LD ('99-'01 NBS) (tube frame changing to C-channel before axle)	HGT1059	\$599.00	<b>c,g</b>
07-18 1500 Long Bed, '07 Boxed Frame	HGT1007	\$599.00	<b>c,g</b>
07-19 1500 Short Bed, '07 Boxed Frame, ('19 Chevy LD & GMC Limited only)	HGT1057	\$599.00	<b>c,g</b>
19-24 1500 (Except '19 Chevy LD & GMC Limited) (Except Carbon Pro Bed)	HGT1019	\$599.00	<b>c</b>
88-00 2500HD/3500HD Long Bed, Full C-Channel Frame	HGT1000	\$599.00	<b>c</b>
01-10 2500 HD	HGT1067	\$599.00	<b>c,g,q</b>
01-07 3500 HD ('07- 2 bed cross members over axle)	HGT1062	\$599.00	<b>c</b>
07-10 3500 HD, New Body Style ('07- One bed cross member over axle)	HGT1067	\$599.00	<b>c,g,q</b>
11-15 2500/3500	HGT1012	\$599.00	<b>c</b>
16-19 2500/3500 (Without 5 factory holes in truck bed)	HGT1016	\$599.00	<b>c,g</b>
20-24 2500/3500 (Without 5 factory holes in truck bed) (except Carbon Pro Bed)	HGT1020	\$699.00	<b>c</b>
<b>Dodge Full Size Pickup,</b>			
94-02 1500/2500/3500 No '02 1500	HGT1394	\$599.00	<b>c</b>
02-08 1500 No Mega Cab	HGT1316	\$599.00	<b>c,g</b>
09-18 1500 ('19-24 1500 Classic only)	HGT1309	\$599.00	<b>a,c,h</b>
19-24 1500, (Except Classic)(Except TRX)	HGT1319	\$599.00	<b>c</b>
06-12 1500/2500/3500 Mega-Cab & '10-'12 2500/3500 Gas	HGT1308	\$599.00	<b>c,g</b>
03-12 2500/3500 No Mega-Cab, No '10-'12 2500/3500 Gas	HGT1313	\$599.00	<b>c,g</b>
2013 2500 No Mega-Cab, No Gas	HGT1313	\$599.00	<b>c,g</b>
2013 2500 Mega-Cab, Also fits Gas	HGT1308	\$599.00	<b>c,g</b>
13-18 3500 (Without 5 factory holes in truck bed)	HGT1314	\$599.00	<b>c</b>
14-18 2500 (Without 5 factory holes in truck bed)	HGT1384	\$599.00	<b>c</b>
19-24 2500/3500 (Without 5 factory holes in truck bed)	HGT1320	\$599.00	<b>c</b>
<b>Ford Full Size Pickup</b>			
80-98 250/350, Without overload springs (Except 250 LD)	HGT1100	\$599.00	<b>c</b>
80-98 250/350, With overload springs	HGT1110	\$599.00	<b>r</b>
04-14 150 (Except '04 old body style)	HGT1104	\$599.00	<b>c</b>
15-24 150 (Except Tremor & Raptor & Lightning & '19-'20 Limited & 21-23 Limited w/ dual exaust)	HGT1121	\$599.00	<b>c</b>
99-10 250/350 SD	HGT1108	\$599.00	<b>c</b>
08-10 F450 SD with factory installed bed	HGT1108	\$599.00	<b>c,w</b>
11-16 F250/350/450 SD with factory installed bed (Without 5 factory holes in truck bed)	HGT1111	\$599.00	<b>c</b>
17-22 F250/350/450 SD with factory installed bed (Without 5 factory holes in truck bed)	HGT1116	\$699.00	<b>c</b>
23-24 F250/350/450 SD with factory installed bed (Without 5 factory holes in truck bed)	HGT1123	\$699.00	<b>c,w</b>
<b>Toyota Tundra</b>			
07-21 (ball cannot be turned over and stowed in hitch, also see footnote a)	HGT1257	\$599.00	<b>a,c,q</b>
22-24 (may need to remove rubber runners from Companions to get latch pin to engage in post)	HGT1222	\$599.00	<b>c,w</b>



- Footnotes:**  
 Most applications: cut or remove heat shield  
**a.** HGT1257 and HGT1309 will not accept standard B&W ball, accessories, or 5<sup>th</sup> wheels. Please call for options.  
**c.** No frame drilling required  
**g.** Notch out lip where fender & bed floor join  
**h.** In-bed ball latch  
**q.** Lower exhaust on some trucks (brackets included)  
**t.** May need to drill one <sup>7</sup>/<sub>16</sub>" hole/ side  
**r.** Loosen bed bolts and drill one <sup>1</sup>/<sub>2</sub>" hole/side  
**w.** Relocate brake and fuel lines, permanently lower exhaust, bracket provided  
**z.** Loosen and/or remove bed bolts and drill two <sup>9</sup>/<sub>16</sub>" holes per side

## Companion 5<sup>th</sup> Wheel



OEM compatible  
Companions  
are listed on  
pages 139-141.

**Free  
Shipping!**  
(zones A, B, C)

- Fits into B&W Turnoverball® hitches
- 20,000 GTW / 5,000 VTW
- 3 height adjustments from 16¼" to 18¼"
- Horizontal adjustment from 1" ahead to 7" behind ball socket
- Fully articulating head allows front/back and side/side pivoting
- Not compatible with REESE Side winder pin box
- Will NOT work with HGT1257 and HGT1309 B&W Turnoverball®

HGT3500 Companion 5<sup>th</sup> wheel \$1099.00

## Companion Slider 5<sup>th</sup> Wheel



**Free  
Shipping!**  
(zones A, B, C)

- Fits into B&W Turnoverball® hitches
- 20,000 GTW / 4,500 VTW
- 3 height adjustments from 17" to 19"
- 2 horizontal adjustments from 1" to 3" rearward of ball socket
- Fully articulating head allows front/back and side/side pivoting
- Not compatible with REESE Side winder pin box
- Will NOT work with HGT1257 and HGT1309 B&W Turnoverball®

HGT3405 Companion 5<sup>th</sup> wheel Slider \$1,599.00

## B&W Turnoverball® Universal Mount



- 6" by 8" plate
- ½" lip for truck bed

HGT1500 Universal Turnoverball \$249.00

## Flat Bed Companion 5<sup>th</sup> Wheel



**Free  
Shipping!**  
(zones A, B, C)

- Fits into B&W Turnoverball® hitches
- 25,000 GTW / 6,250 VTW
- Fixed height of 10½"
- Footprint 17¼" wide by 18" deep
- Fully articulating head allows front/back and side/side pivoting
- Not compatible with REESE Side winder pin box
- Will NOT work with HGT1257 and HGT1309 B&W Turnoverball®

HGT3050 Companion 5<sup>th</sup> wheel for flatbed \$999.00

## Replacement Parts & Accessories



HGT1710 Ball hole cover for stowed Turnoverball® \$16.95

HGT1715 Ball hole cover for empty Turnoverball® socket \$16.95

HGT9990 Replacement safety chain attachment kit \$37.95

• Items below will NOT work with HGT1257 and HGT1309 B&W Turnoverball® hitches. Call for options for those hitches.

HGT2000 Replacement Turnoverball®, 30K \$111.96

HGT4085 4" Offset Ball, 20K \$190.95

HGT2050 1" Hi-Rise Ball, 20K \$161.95

HGT2025 3" Turnover Ball \$189.95

HG30033 WeighSafe Ball with tongue weight scale \$274.00

HG30054 CURT cushioned gooseneck ball, 30K \$299.95

HGT4000 King Pin, 30K \$190.95

## X5 Adapter



- Converts from B&W Turnover Ball hitch to standard bed rails
- Not compatible with turret-style pin boxes, such as Sidewinder or Turning Point
- Will not fit B&W HGT1257 & HGT1309
- Will not fit trucks with aluminum beds
- Factory or aftermarket bedliners may interfere with installation
- For 5<sup>th</sup> wheel hitch up to 20,000 lbs. GTW, 4,000 PW

HG16310 X-5 Adapter for up to 20K 5th Wheel \$704.95



# Folding Ball Gooseneck

## Folding Ball Gooseneck



- 30,000 GTW / 7,500 lb TW
- Durable carbide powder coat finish
- Easy to follow installation instructions
- Easy access to grease fittings
- Stainless steel pivot spring and safety pin
- Cutting templates (paper template included)
- U-bolt safety chain hook-ups
- No tools needed to fold

HGFD	Folding ball gooseneck hitch	\$241.95
HGFDU	Replacement safety chain U-bolts	\$32.95

## Fixed Ball Gooseneck Plate



- 30,000 GTW
- Mounting hardware included
- Safety chain U-bolts sold separately
- Fits CURT folding ball install kits

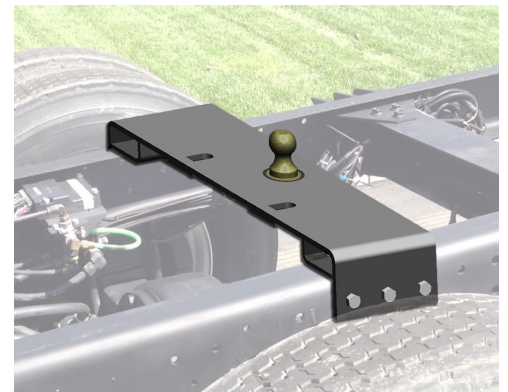
HGFP	Fixed ball gooseneck hitch	\$169.95
HGFDU	Safety chain U-bolt kit	\$32.95

## Folding Ball Install Kits



- 30,000 GTW
- Rust-resistant liquid Bonderite® coating
- Vehicle-specific design optimizes strength and install time
- All 2WD trucks need clearance check when truck is loaded & unloaded to verify inverted ball won't hit differential.

Application Chart (NO Cab & Chassis trucks)	ITEM#	Price	Frame Drill
<b>Chevrolet/GMC Full Size Pickups</b>			
99-07 1500/2500 Light Duty, 07 Classic only	HGF341	\$405.95	No
01-10 2500/3500 Heavy Duty	HGF341	\$405.95	No
11-19 2500/3500 Heavy Duty (Without 5 factory holes in truck bed)	HGF301	\$288.00	No
<b>Ford Full Size Pickups</b>			
99-16 F250/350 Super Duty, 08-11 F450 w/ factory bed (Without 5 factory holes in truck bed)	HGF332	\$304.95	No



- Includes standard 2 5/16" gooseneck ball
- Designed to fit 34" wide cab & chassis frames
- 2" of lift above truck frame for exhaust clearance
- Rotate spring-loaded handle pin to release ball
- Ball stows inverted out of the way in the socket
- Rated for 30,000 GTW and 7,500 TW

HGP203	Cab & Chassis Flip-Over Gooseneck	\$655.00
--------	-----------------------------------	----------

## Multi-Fit OEM Puck System Gooseneck



- 4" rearward offset provides improved turning and clearance
- Integrated safety chain holders
- Multi-fit design fits select Chevrolet, Ford, GMC, Nissan, & RAM puck systems

HG30058	2 5/16" ball w/ 4" offset, 30K GTW, 7,500 TW	\$399.95
---------	--	----------





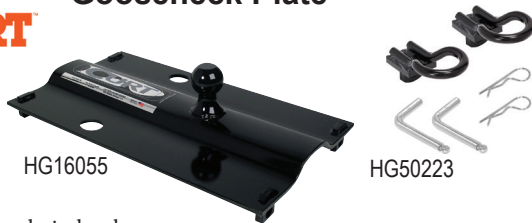
## Gooseneck Spyder



- 20 $\frac{1}{2}$ " wide
- Includes safety chain hookups
- 4 attaching pins & clips included
- Easy 4-pin installation & removal allows full access to bed
- Mounts to most 5th wheel rails including HG16200
- Durable black carbide finish resists rust & corrosion
- Use HG50223 if your state does not allow safety chains to be attached to the ball plate.
- Distributes weight closer to vehicle frame than HG16055

HG16085	Spyder Gooseneck, 25K GTW, 6,250 TW	\$329.95
HG16090	Spyder Gooseneck, 30K GTW, 7,500 TW	\$423.95
HG50223	Safety Chain Bracket Kit	\$129.95
HG5163	4 Replacement Attaching Pins & Clips	\$14.95

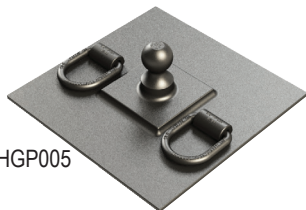
## Gooseneck Plate



- 25,000 GTW
- Built-in Safety chain hookups
- 4 attaching pins & clips included
- Easy 4-pin installation & removal allows full access to bed
- Mounts to most 5th wheel rails including HG16200
- Durable black carbide finish resists rust & corrosion
- Can be positioned over the axle or flipped for 3" rearward offset
- Use HG50223 if your state does not allow safety chains to be attached to the ball plate.

HG16055	Gooseneck Bent Plate, 10" wide, 6,250 TW	\$219.95
HG50223	Safety Chain Bracket Kit	\$129.95
HG5163	4 Replacement Attaching Pins & Clips	\$14.95

## Weldable Gooseneck Plates



HGP005



HGP000



- Underbed reinforcement required to reach maximum GTW rating.
- |        |  |         |          |
|--------|--|---------|----------|
| HGP005 | Gooseneck plate w/ d-rings, 16" x 16" x 3/8" | 30K GTW | \$148.95 |
| HGP000 | Gooseneck plate w/ d-rings, 13" x 48" x 3/8" | 30K GTW | \$329.95 |

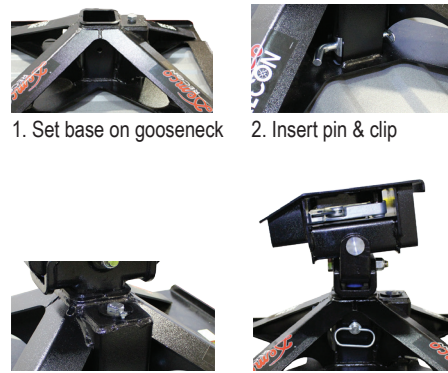
## Gooseneck Mounted 5<sup>th</sup> Wheel



MADE in USA!



### Easy install!



1. Set base on gooseneck
2. Insert pin & clip
3. Tighten torque bolt
4. Insert & pin head

- Unique mounting design fits most 2 $\frac{1}{16}$ " gooseneck balls
- Light weight, two-piece geometric design (only 135 lbs total)
- Wrap-around jaw design with lock bar for more secure towing
- Fully articulating head allowing front/back and side/side pivoting
- 3 height adjustments from 15 $\frac{1}{2}$ " to 18"
- 21,000 GTW, 4,000 VTW
- Not compatible with REESE Side winder pin box
- Freight extra to zone A/B/C: \$59/\$79/\$99

### HG50046:

- Compatible with recessed goosenecks
- Top of G-Neck Ball must be no lower than 1 $\frac{3}{16}$ " below deck surface
- Minimum recessed pocket 14" x 14" - Maximum 18" x 18"
- Must have minimum of 7-1/2" from the center of the goose ball to the rear (bumper) side of the recessed pocket
- Minimum recessed pocket depth 3.875"

HG50045	21K G-neck Ball Mounted 5 <sup>th</sup> Wheel	\$839.00
HG50046	21K Recessed G-neck Ball Mounted 5 <sup>th</sup> Wheel	\$839.00

## Safe Load Gooseneck Plate



- Built-in tongue weight scale
- Fits industry standard rails
- 30,000 GTW, 7,500 TW
- 2 $\frac{1}{16}$ " stainless steel ball
- Can be positioned over the axle or flipped for 3" rearward offset



HG30039	Safe Load Gooseneck Plate	\$354.00
---------	---------------------------	----------





## 5<sup>th</sup> Wheel Quick Install Brackets



HG16429

HG16431

- Brackets custom fitted to your truck frame.
- Reduces install time up to 50%
- Does not include bed rails or 5th wheel hitch
- Frame and bed rail mounting hardware included
- Fits most standard 5th wheel rails
- No Cab & Chassis trucks
- Available for Nissan Titan & Toyota Tundra, please call
- Beds must be at least 6' long

## CURT A-series 5<sup>th</sup> Wheels



HG16120

Free Shipping!  
(zones A, B, C)

HG16052

- Fast, one pin head removal
- Includes 10" lube plate #HG5LP
- Fully-articulating torsion head for controlled coupling
- Interlocking cast jaws fully wrap the kingpin
- Cast yoke and poly torsion inserts suppress shock and noise
- Lock indicators visible from vehicle cab
- Rails sold separately: HG16200 or HG16204
- Use custom quick install brackets for enclosed boxed frames.
- Limited lifetime warranty
- Compatible with REESE Side winder pin box
- HG16052, HG16531, & HG16551 slide 12"

Application Chart (no Cab & Chassis trucks)		ITEM#	Price	Frame Drill
<b>Chevy/GMC Full Size Pickup</b>				
99-07	1500 (07 Classic only)	HG16418	\$234.95	
07-19	1500 (19 Legacy only)	HG16400	\$272.95	no
19-24	1500 (Without 5 factory holes in truck bed)	HG16469	\$299.95	no
01-10	2500/3500 (99-04 2500LD)	HG16418	\$234.95	
11-19	2500/3500 (Without 5 factory holes in truck bed)	HG16411	\$176.95	no
20-24	2500/3500 (Without 5 factory holes in truck bed)	HG16429	\$237.95	no
<b>Dodge/RAM Full Size Pickup</b>				
06-08	1500 Mega Cab only	HG16420	\$235.95	no
09-10	1500	HG16306	\$149.95	
11-18	1500 (Excluding Limited) Coil springs only	HG16306	\$149.95	
13-17	1500 With factory air suspension	HG16444	\$293.95	no
19-24	1500 Classic, Coil springs only	HG16306	\$149.95	
19-25	1500 (Excluding multifunction tailgate & TRX)	HG16307	\$253.95	no
03-12	2500/3500 Inc Mega Cab	HG16420	\$235.95	no
2013	2500 (Without 5 factory holes in truck bed)	HG16430	\$201.95	
14-24	2500 (Without 5 factory holes in truck bed)	HG16427	\$218.95	no
13-24	3500 (Without 5 factory holes in truck bed)	HG16430	\$201.95	
<b>Ford Full Size Pickup</b>				
04-14	F150 (04 New Body Style only)	HG16441	\$171.95	no
15-24	F150 (Excluding Police Responder & Lightning)	HG16911	\$283.95	no
99-04	F250/350 Super Duty,	HG16443	\$201.95	
05-10	F250/350 & 08-10 F450 (no Cab & Chassis)	HG16448	\$179.95	
11-16	F250/350 (11-15 F450 no Cab & Chassis) (Without 5 factory holes in truck bed)	HG16424	\$199.95	no
17-22	F250/350/450 (no Cab & Chassis) (Without 5 factory holes in truck bed)	HG16431	\$266.95	no
23-24	F250/350 SD (Without 5 factory holes in truck bed)	HG16432	\$276.95	no

ITEM#	GTW	PW	3 Height Positions	Price
HG16120	16K	4,000	13 - 17"	\$656.95
HG16140	20K	5,000	13 - 17"	\$898.95
HG16180	25K	6,250	13 - 17"	\$948.95
HG16052	16K	4,000	17½" - 21½" slider	\$1137.95
HG16531	20K	5,000	17½" - 21½" slider	\$1154.95
HG16551	25K	6,250	17½" - 21½" slider	\$1365.95

## 5<sup>th</sup> Wheel Rails



HG16200

- Fits most 5th wheel hitches with standard foot print
- Can be used with quick install bracket kits
- HG16204/16200: 25K rated

HG16204	Bed Rails (Quick-install brackets sold sep.)	\$110.95
HG16200	Bed Rails & Universal L-bracket kit	\$160.95
HG16101	Replacement L-bracket kit with hardware	\$125.95
HG5163	4 Replacement Pins & Clips for 5th Wheel	\$14.95

## Patriot 5<sup>th</sup> Wheels



**Free Shipping!**  
(zones A, B, C)



- Side to side pivot with spring cushioning
- Fully articulating head allowing front-back and side-side pivoting
- Bed rails sold separately
- HGT3250- 16-19" height adjustments
- HGT3255- 1-piece base design for easier installation & more strength
- HGT3270- Not compatible with HG16027
- HGT3270- 12" of slide, 17"-19" height adjustment

HGT3250	16K Patriot	4,000 PW	\$699.00
HGT3255	18K Patriot	4,500 PW	\$799.00
HGT3270	18K Patriot Slider	4,500 PW	\$899.00
HGT3210	Bed Rails for Patriot 5th wheel		\$130.00

## CURT PowerRide™ 5<sup>th</sup> Wheels



- Professional-grade 5th wheel towing power!
- Fast, one pin head removal
- Integrated wear plates for smooth operation and no grease
- Ergonomic, self-resetting handle for easier use from the side
- Multi-directional, cast yoke head for smooth ride
- Interlocking cast jaws fully wrap the kingpin
- Three-position coupling indicator clearly shows coupling status
- Use custom quick install brackets for enclosed boxed frames.
- Rails sold separately
- Limited lifetime warranty
- Compatible with REESE Side winder pin box

### •HG16205:

Industry-standard mounting point to accept most 5th wheel hitches  
Designed for use with custom 5th wheel brackets (sold separately)

ITEM#	GTW	PW	4 Height Positions	Price
HG16320	30K	7,500	13" to 17"	\$1203.95
HG16205	40K	Bed rails		\$217.95

## Companion 5<sup>th</sup> Wheel



**Free Shipping!**  
(zones A, B, C)



- Side to side pivot with spring cushioning
  - Fully articulating head allowing front-back and side-side pivoting
- |         |                                   |          |
|---------|-----------------------------------|----------|
| HGT3550 | 20K Companion, rail mounted       | \$899.00 |
| HGT3210 | Bed Rails for Companion 5th wheel | \$130.00 |

## 5<sup>th</sup> Wheel Lube & Grease



Lube Plate



Grease Packet

HG5LP	10" Lube Plate	\$11.95
HG5LPL	Reese Elite™ 12" Lube Plate	\$16.95
HG5199	2oz Permatex 5 <sup>th</sup> Wheel Grease Packet	\$1.95



Infinite Rule Coupler  
Latch Lock  
See page 31



# Ford OEM-Compatible Options

## 5<sup>th</sup> Wheels



HG16039

**Free Shipping!**  
(zones A, B, C)



HGT3305



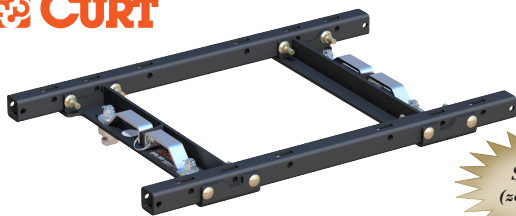
HG16594

**New!**

- Designed to fit Ford trucks with factory holes in the bed
- HG16039: 3 height adjustments from 13" to 17"
- HGT3300/3305: 3 height adjustments from 16¾" to 18¾"
- HG16594: 4 height adjustments from 13" to 17"

HG16039	25K CURT 5 <sup>th</sup> wheel	6,000 PW	\$1099.00
HGT3300	20K B&W Companion™ 5 <sup>th</sup> wheel	5,000 PW	\$1199.00
HGT3305	25K B&W Companion™ 5 <sup>th</sup> wheel	6,250 PW	\$1399.00
HG16594	30K Curt PowerRide 5 <sup>th</sup> wheel	7,500 PW	\$1425.95

## Puck to Standard Rail Adapter



**Free Shipping!**  
(zones A, B, C)

- Designed to fit Ford trucks with factory holes in the bed
- Provides industry-standard rails accepting most 5th wheel hitches
- Not compatible with B&W Patriot slider fifth wheels

HG16027	25K adapter to standard 5 <sup>th</sup> wheel rails	6,250 PW	\$424.95
---------	---	----------	----------

## Short Bed 5<sup>th</sup> Wheels



**Free Shipping!**  
(zones A, B, C)

HG16057



HGT3370

**Free LTL shipping!**  
(see pg. 186)

- Designed to fit Ford trucks with factory holes in the bed
- HG16057: 3 height adjustments from 19" to 23"
- HGT3370: 3 height adjustments from 16¾" to 18¾"

HG16057	25K CURT 5 <sup>th</sup> wheel roller	6,250 PW	\$1790.15
HGT3370	20K B&W Companion™ 5 <sup>th</sup> wheel slider	5,000 PW	\$1699.00

## Ford Ball Kits



HG30010



HG30061



HG30031

- Designed to fit Ford trucks with factory holes in the bed
- HG30061: Handle keeps hands clean and serves as ball latch
- HG30031/HG30034: Built-in hydraulic tongue weight scale

HG30010	30K CURT ball kit	\$248.95
HG30016	38K CURT ball kit	\$271.95
HG30061	30K B&W ball kit	\$299.00
HG30031	30K WeighSafe ball kit	\$334.00
HG30034	30K WeighSafe ball only	\$274.00
HG30011	Pair of CURT safety chain attachments	\$79.95





## 5<sup>th</sup> Wheels



HG16049

**Free Shipping!**  
(zones A, B, C)



HGT3600

**Free LTL shipping!**  
(see pg. 186)

- Designed to fit Dodge trucks with factory holes in the bed
- HG16049/30919: 3 height adjustments from 14" to 18"
- HGT3600: 3 height adjustments from 17" to 19"

HG16049	25K CURT 5 <sup>th</sup> wheel	6,250 PW	\$999.00
HGT3600	25K B&W Companion™ 5 <sup>th</sup> wheel	6,250 PW	\$1399.00

## Short Bed 5<sup>th</sup> Wheels



HG16058

**Free Shipping!**  
(zones A, B, C)



HGT3670

**Free LTL shipping!**  
(see pg. 186)

- Designed to fit Dodge trucks with factory holes in the bed
- HG16058: 3 height adjustments from 20" to 24"
- HGT3670: 3 height adjustments from 17" to 19"

HG16058	25K CURT 5 <sup>th</sup> wheel roller, 6,250 PW	\$1830.20
HGT3670	20K B&W Companion™ 5 <sup>th</sup> wheel slider, 5,000 PW	\$1699.00

## RAM Ball Kits



HG30062



HG30012



HG30032

- Designed to fit Dodge trucks with factory holes in the bed
- HG30062: Handle keeps hands clean and serves as ball latch
- HG30032/HG30034: Built-in hydraulic tongue weight scale

HG30012	30K CURT ball kit	\$248.95
HG30018	38K CURT ball kit	\$271.95
HG30062	30K B&W ball kit	\$299.00
HG30032	30K WeighSafe ball kit	\$334.00
HG30034	30K WeighSafe ball only	\$274.00
HG30013	Pair of CURT safety chain attachments	\$89.95

## Puck to Standard Rail Adapter



**Free Shipping!**  
(zones A, B, C)

- Designed to fit RAM trucks with factory holes in the bed

HG16042	25K adapter to standard 5 <sup>th</sup> wheel rails	\$465.95
---------	---	----------



# Chevy & Nissan OEM-Compatible Options



## 5<sup>th</sup> Wheels



HGT3705



HG16070

**Free Shipping!**  
(zones A, B, C)

- Designed to fit Chevy/GMC trucks with factory holes in the bed
- CURT models: 3 height adjustments from 13” to 17”
- B&W models: 3 height adjustments from 16¾” to 18¾”

16-19 Pickups			
HG16066	25K CURT 5 <sup>th</sup> wheel	6,250 PW	\$1202.95
HGT3700	20K B&W Companion 5 <sup>th</sup> wheel	5,000 PW	\$1199.00
HGT3705	25K B&W Companion 5 <sup>th</sup> wheel	6,250 PW	\$1399.00
20-24 Pickups			
HGT3710	20K B&W Companion 5 <sup>th</sup> wheel	5,000 PW	\$1199.00
HGT3715	25K B&W Companion 5 <sup>th</sup> wheel	6,250 PW	\$1399.00
HG16093	25K CURT 5 <sup>th</sup> wheel	6,250 PW	\$1220.95
HG16070	30K CURT 5 <sup>th</sup> wheel	7,500 PW	\$1533.95

## Chevy/GMC & Nissan Ball Kits



HG30061



HG30010



HG30031

- Fits Chevy/GMC & Nissan trucks with factory holes in the bed
- HG30061: Handle keeps hands clean and serves as ball latch
- HG30031/HG30034: Built-in hydraulic tongue weight scale

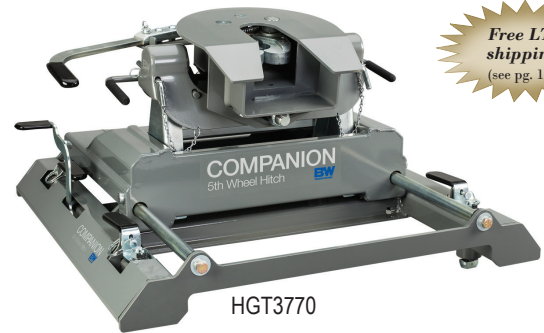
HG30010	30K CURT ball kit	\$248.95
HG30016	38K CURT ball kit	\$271.95
HG30061	30K B&W ball kit	\$299.00
HG30031	30K WeighSafe ball kit	\$334.00
HG30034	30K WeighSafe ball only	\$274.00
HG30011	Pair of CURT safety chain attachments	\$79.95

## Short Bed 5<sup>th</sup> Wheels



HG16698

**Free Shipping!**  
(zones A, B, C)



HGT3770

**Free LTL shipping!**  
(see pg. 186)

- Designed to fit Chevy/GMC trucks with factory holes in the bed
- HG16698: 3 height adjustments from 19” to 23”
- B&W models: 3 height adjustments from 16¾” to 18¾”

16-19 Pickups			
HG16698	20K CURT 5 <sup>th</sup> wheel roller	5,000 PW	\$1611.95
HGT3770	20K B&W Companion slider	5,000 PW	\$1699.00
20-24 Pickups			
HGT3775	20K B&W Companion slider	5,000 PW	\$1699.00

## Puck to Standard Bed Rail Adapters



**Free Shipping!**  
(zones A, B, C)

- Designed to fit Chevy/ GMC truck with factory holes in bed
- Provides industry-standard rails accepting most 5th wheel hitches
- Not compatible with B&W Patriot slider fifth wheels

17-19 Pickups (with 5th wheel prep package)			
HG16050	30K adapter	7,500 PW	\$449.95
20-24 Pickups (with 5th wheel prep package)			
HG16027	25K adapter	6,250 PW	\$424.95

## Round Gooseneck Couplers



TCG230

- 2<sup>5</sup>/<sub>16</sub>" ball, 30" retracted height + 8" adjustment
- Precision cast one piece coupler casting
- Curved internal ball clamp bar for better fit
- Protected hidden spring latch mechanism

TCG225	25K, 3 <sup>15</sup> / <sub>16</sub> " O.D. inner tube, includes outer tube	\$129.95
TCG221	25K, Inner tube with coupler head for TCG225	\$118.95
TCG230	30K, 3 <sup>15</sup> / <sub>16</sub> " O.D. inner tube, includes outer tube	\$150.95
TCG231	30K, Inner tube with coupler head for TCG230	\$135.95
TCG980	3/4" Load Bearing pin	\$9.19

## Bulldog Gooseneck Coupler



- 2<sup>5</sup>/<sub>16</sub>" ball, 30" height + 8" adjustment

TCG226	30K, 4" O.D. inner tube, includes outer tube	\$249.95
TCG980	3/4" Load Bearing pin	\$9.19

## Square Gooseneck Couplers



TCG430



TCG433



HGN2

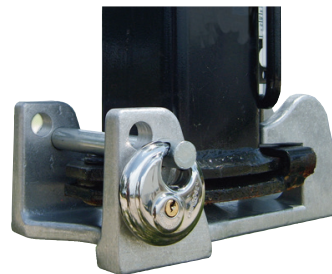
- 2<sup>5</sup>/<sub>16</sub>" ball, 32" retracted height

### TCG430/431/433/440

- Precision cast one piece coupler casting
- Curved internal ball clamp bar for better fit
- Protected hidden spring latch mechanism
- TCG430: 8" adjustment
- TCG433: 7" adjustment
- TCG433: Load leveling gooseneck coupler
- TCG440: 3" ball, 29" retracted height

TCG430	30K 4" O.D. inner tube, 4.5" O.D. outer tube, RAM brand	\$180.95
TCG431	30K Inner tube with coupler head for TCG430	\$168.95
TCG433	30K 4" O.D. inner tube, 4.5" O.D. outer tube, RAM brand	\$191.95
TCG440	40K 4" O.D. inner tube, 4.5" O.D. outer tube, RAM brand	\$212.95
TCG980	3/4" Load Bearing pin for RAM & Bulldog couplers	\$9.19
HGN2	28K 4 <sup>1</sup> / <sub>2</sub> " square lockable auto-latch, Popup brand	\$303.00

## Gooseneck Coupler Locks



HALEZ50



HALEZ51



HALEZ55



HALEZ45

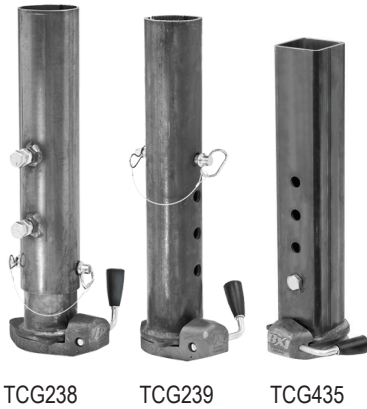
- HALEZ50: Not compatible with cushioned, GEN-Y, offset, or auto-latching couplers. Secure with our padlock HALEZ45.
- HALEZ51- Secure the height adjustment set screw on all round and square tube gooseneck couplers. Secure with our padlock HALEZ45

HALEZ50	Gooseneck coupler lock	\$66.95
HALEZ51	Gooseneck coupler adjustment lock	\$45.95
HALEZ53	HALEZ50 & HALEZ51 with two padlocks	\$124.95
HALEZ45	Stainless Steel Disc Padlock, not keyed alike	\$14.95
HALEZ47	Stainless Steel Disc Padlock, Keyed Alike!	\$14.95
HALEZ55	Gooseneck coupler lock for RAM couplers	\$66.95
HALEZ57	HALEZ55 & HALEZ51 with two padlocks	\$124.95





## Bulldog BX1 Gooseneck Couplers



TCG238      TCG239      TCG435

- 2<sup>5</sup>/<sub>16</sub>" ball, 30" height + 8" adjustment
  - TCG435: Cone-shaped latch plate guides trailer onto ball
  - Allows for shorter retracted height for trucks with high bed height
  - Continuous tight fit – ever-increasing cam tightening mechanism
  - Integrated feature allows for padlocking the coupler to ball
- |        |   |          |
|--------|---|----------|
| TCG238 | 30K, 4" O.D inner tube, includes outer tube, BX1      | \$282.95 |
| TCG239 | 30K, Inner tube with coupler head for TCG238, BX1     | \$195.95 |
| TCG435 | 25K, 4" O.D. square inner tube with coupler head, BX1 | \$237.95 |
| TCG980 | 3/4" Load Bearing pin                                 | \$9.19   |

## GEN-Y VIKING Gooseneck Couplers



TCG7101      TCG7102

- SnapLatch design
- SnapLatch Pull Rod
- Durable powder coat finish



HRL1157

TCG7101	4" square tube, 30K, 8,500 TW, 2 <sup>5</sup> / <sub>16</sub> " coupler	\$397.99
TCG7102	4" round tube, 30K, 8,500 TW, 2 <sup>5</sup> / <sub>16</sub> " coupler	\$479.97
HRL1157	Infinite Rule latch lock for Spartan w/ Snaplatch	\$45.99

## Offset Couplers



HGSB042      HGSB104      HGSB116

- Adds clearance between truck and trailer for short bed trucks
- Rated to 24,000 GTW and 6,000 TW
- Lockable with your padlock
- HGSB042: B&W brand, self-aligning, cone-shaped coupler
- PopUp brand: Self-latching coupler, includes release cable and hardware

HGSB042	10" offset	4" round tube	\$399.00
HGSB104	9" offset	4" round tube 4" longer lower tube	\$478.00
HGSB200	9" offset	4 1/2" square tube	\$452.00
HGSB300	9" offset	4" square tube	\$452.00
HGSB116	16" offset	4" round tube	\$559.00
HGSB216	16" offset	4 1/2" square tube	\$561.00
HGSB316	16" offset	4" square tube	\$559.00

## Kingpin Adapters



- 30,000 GTW
- HGN740: 40,000 GTW
- Use the kingpin adapter in place of your gooseneck coupler
- Clearance measured from center of bottom pin hole down to the top of plate

ITEM#	Tube Dia.	Clearance	Hole dia.	Finish	Price
HGN5	4" round tube	2 1/4"	7/8" pin holes	black	\$267.00
HGN530	3 1/2" round tube	5 1/2"	3/4" pin holes	unpainted	\$143.95
HGN7	4" square tube	2"	1" pin holes	black	\$267.00
HGN730	4" square tube	7 3/4"	3/4" pin holes	unpainted	\$165.95
HGN740	4" square tube	5.315"	3/4" pin holes	unpainted	\$182.95
HGN6	4 1/2" square tube	2 1/4"	1 1/8" pin holes	black	\$272.00
TCG980	3/4" Load Bearing Pin for RAM kingpin adapters				\$9.19

*Kingpin adapters are available in offset models.  
Call for more information.*



## Kingpin



Standard 2" SAE kingpin. 3/8" bolster plate not included. Must be preheated and welded by experienced professional welder.

HGK	Kingpin	\$78.95
HALKP60	Heavy Duty King Pin lock	\$55.95

## King Pin to Gooseneck Adapter



HGKA



HGKA2

- 30,000 GTW
- 5th wheel must be locked into position to use
- Standard 2" king pin on bottom side with 2-5/16" ball on the top side
- HGKA: One-piece forged design: 8" diameter bolster plate
- HGKA2: Zinc plated, welded design, 10" diameter bolster plate
- See electrical section for 7-pin adapters

HGKA	King pin to gooseneck adapter, forged design	\$139.95
HGKA2	King pin to gooseneck adapter, zinc plated	\$173.95

## Cushioned 5<sup>th</sup> Wheel Adapters



HCGA1216



HCGOA1216

- Fits all standard kingpins.
- Includes safety chains
- Attaches to kingpin on trailer and adapts to gooseneck ball on truck
- Polypropylene cushions cover bumps and jars for a smoother ride
- Height is measured from top of ball to base of king pin.
- Adapter must be bolted to king pin box (Optional for HCGA1216)
- King pin box must be strong enough to handle extra leverage.
- May void trailer warranty.

HCGA1216	12-16" adjustable height 20,000 GTW/4,000 TW	\$620.95
HCGOA1216	7 1/2" offset, 12-16" adjustable height 20,000 GTW/2,000 TW	\$811.95

## Cushioned Gooseneck Couplers



TCG266



TCG267

- 4" round pipe
- TCG266-Cushions up, down, and 360°. Takes the shake, rattle, and roll out of gooseneck towing. Has ball guides for easy hookup
- TCG267-Single cushion for more stability, 2 year warranty on cushion, self-latching coupler, provided cable allows you to unlatch without entering your truck bed. Drilled tube to allow use of thru-pin.

TCG266	Rubberneck™ Coupler, 30,000 GTW	\$306.95
TCG267	Cushion Coupler, 30,000 GTW	\$773.00

## GEN-Y SPARTAN Torsion Coupler



HRL1157



TCG7062S

- 2.5" offset
- Best cushion gooseneck ride available
- Uses rubber torsion technology similar to torsion trailer axles
- 100% Satisfaction Guaranteed!
- 5-year torsion warranty; Lifetime workmanship warranty!

ITEM#	Description	GTW/TW	Optimum Ride TW	Price
TCG7002S	4" Round tube	25K, 3.5K	1,501-3,000 lb.	\$1031.99
TCG7042S	4" Round tube	25K, 4.5K	3,001-4,000 lb.	\$1031.99
TCG7062S	4" Round tube	25K, 5.5K	4,001-5,000 lb.	\$1146.99
TCG7082S	4" Round tube	25K, 6.5K	5,000-6,000 lb.	\$1203.99
TCG7072S	4" square tube	30K, 5.5K	4,001-5,000 lb.	\$1146.99
HRL1157	Infinite Rule latch lock for Spartan w/ Snaplatch			\$45.99



## Goose Coupler Adapter



- Say "NO" to bolt-on or clamp-on 5th wheel adapters
- Replaces existing king pin box on your RV
- Allows for 4" height adjustment at coupler
- Always check trailer weight capacity before installing Goosebox
- Rated at 24,000 lb/ 6,500 TW
- Limited Lifetime Warranty
- HG94602 fits Lippert #1621 & 0719 wing sets
- HG94601 fits Lippert #1716, 1116 & 0115

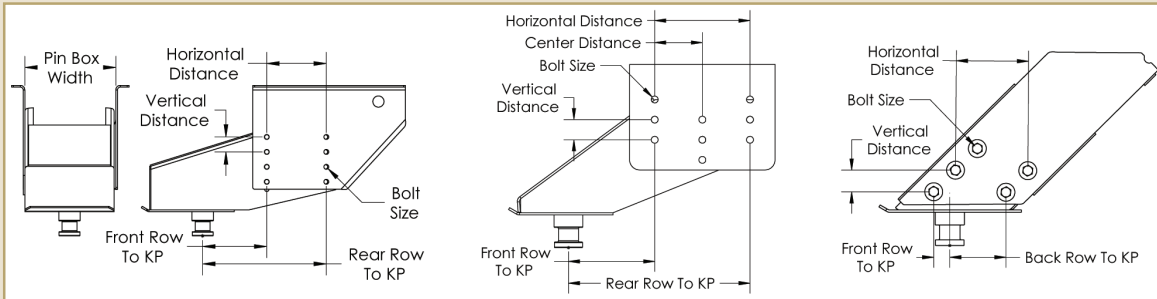
HG94602	Goosebox Adapter	\$824.00
HG94601	Goosebox Adapter (Allow 1-2 wks for delivery)	\$824.00
HG94609	Accessory safety chain kit (Allow 1-2 wks for delivery)	\$149.00

## Goose Box Adapter



- Endorsed by Lippert Components, Inc. for their frame systems
- Air bag, dual shocks and rubber bumpers provide multi-directional shock absorption for a smoother driving experience
- Fits Lippert 1621, 1716, 0719, and Fabex PB 600 Series, and those with the Lippert Rhino bolt-hole pattern
- Air pressure relief valve prevents overfilling of air bags
- Always check trailer weight capacity before installing Goose Box
- Limited Lifetime warranty

HG94716	16K Goosebox, 3,200 pin weight,excludes Rhino	\$1649.00
HG94920	20K Goosebox, 4,000 pin weight	\$1969.00
HG94629	16K safety chain kit	\$79.95
HG94628	20K safety chain kit	\$99.95
HG94619	*Goosebox spacer needed for Lippert 1716,1116,0115	\$69.95



### Determining the pin box model on your camper

1. Look on the pin box to locate the manufacturer's name & part #
2. Or call the RV manufacturer with the last 6 digits of the serial #
3. Or take measurements as illustrated and call us

GEN-Y  
Lightweight  
Aluminum Ramps  
See page 19



GEN-Y  
Heavy Duty  
Aluminum Ramps  
See page 19

