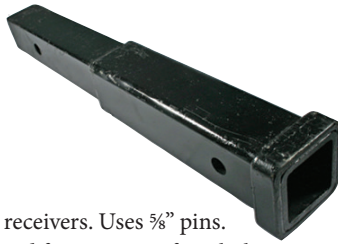


Receiver Adapters & Extensions



Receiver Tube Extenders



- Fits standard 2" receivers. Uses 5/8" pins.
- Length is measured from center of pin hole to center of pin hole.
- Reduces the weight capacity of your receiver hitch by 1/3 with a 3,500/350 lb limit.

HAX072	7" receiver extension	\$41.95
HAX122	12" receiver extension	\$54.95
HAX18	18" receiver extension	\$73.95
HAX079	1 1/4" receiver, 7" receiver extension, Not for towing	\$41.95

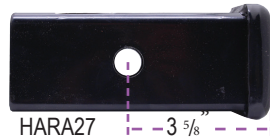
2 1/2" To 2" Adapters



HARA24 end view showing positioning tabs



HARA25



HARA27 3 5/8"

- Requires 5/8" long pin #HARPL (not included)
- Weight capacity is limited to receiver hitch
- HARA24: Has tabs to keep sleeve from sliding into receiver
- HARA25: Only needs 3" from center of pin hole to ball mount gusset
- HARA27: Requires 3 5/8" from center of pin hole to ball mount gusset

HARA24	2 1/2" receiver to 2" accessory, sleeve bushing type	\$19.95
HARA25	2 1/2" receiver to 2" accessory, bushing with collar	\$29.95
HARA27	2 1/2" receiver to 2" accessory, bushing with collar	\$52.95
HARPL	5/8" pin, 5" usable length	\$4.99

3" Adapters



HARA325



HARA32

- Requires 5/8" long pin #HARPL (not included)
- Weight capacity is limited to receiver hitch
- HARA32: 12,000 GTW, 1,200 TW

HARA325	3" receiver to 2 1/2" accessory, sleeve bushing type	\$31.95
HARA32	3" receiver to 2" accessory, extension type	\$56.95
HARPL	5/8" pin, 5" usable length	\$4.99

Multi-purpose Extensions



- HAX005- Receiver capacity 500 lb, ball tongue capacity 750 lb, Never exceed 750 lb total. 12" from pin hole to ball hole
- HAX004- 3,500 GTW / 350 TW, 4 1/4" Rise, 5 1/4" Length
- HAX006- 4,000 GTW / 400 TW, 12" Length

HAX005	2" receiver, Multi-purpose ball mount	\$80.95
HAX004	2" receiver, Rise extension	\$97.95
HAX006	2" receiver, Dual receiver extension	\$119.95

1 1/4" To 2" Adapters



HB560

HB580

- 3,500 GTW/350 TW (limited to 85% of your receiver hitch rating)
- Length is measured from center of pin hole to center of pin hole.
- 5/8" and 1/2" pins sold separately
- HB560: labeled "Not for towing, designed for accessories."
- HB580: Adapts from 1 1/4" receiver to 2" accessory

HB560	1 1/4" receiver to 2" accessory, 6" long	\$54.95
HB580	1 1/4" receiver to 2" accessory, 5" rise, 6 1/2" long	\$73.95

2" To 1 1/4" Adapter



HB561

- 3,500 GTW/350 TW (limited to 85% of your receiver hitch rating)
- Length is measured from center of pin hole to center of pin hole.
- 5/8" and 1/2" pins sold separately

HB561	2" receiver to 1 1/4" accessory, 4" long	\$41.95
-------	--	---------



Weld-On Receiver Tubes



These tubes come with a pre-drilled pin hole and reinforcing collar. The pin hole end is "broached out" to industry standard sizes.

HAW2006	2" inside diameter	6" long	\$10.95
HAW2012	2" inside diameter	12" long	\$19.95
HAW2018	2" inside diameter	18" long	\$35.95
HAW2024	2" inside diameter	24" long	\$58.95
HAW2036	2" inside diameter	36" long	\$80.95
HAW2048	2" inside diameter	48" long	\$90.95
HAW2510	2½" inside diameter	10" long	\$22.95
HAW2518	2½" inside diameter	18" long	\$53.95
HAW3012	3" inside diameter	12" long	\$46.95
HAW3018	3" inside diameter	18" long	\$65.95
HAW146	1¼" inside diameter	6" long	\$15.95
HAW14	1¼" inside diameter	9" long	\$15.95

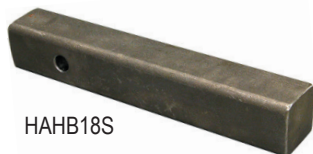
2" OD Steel Tubing



- Heavy duty, ¼"-walled steel tube
- ⅝" pin hole is pre-drilled
- 2" O.D. square tubing

HAT2012	12" long	\$24.95
HAT2018	18" long	\$31.95
HAT2024	24" long	\$40.95
HAT2036	36" long	\$58.95
HAT2048	48" long	\$75.95

Solid Steel Hitch Bar



HAHB18S

Use these solid steel hitch bars to manufacture your own ball mount. Fits into class 3, 4, or 5 receiver hitches. ⅝" pin hole is pre-drilled.

HAHB12S	12" long, 2" square solid bar	\$55.95
HAHB18S	18" long, 2" square solid bar	\$95.95
HAHB24S	24" long, 2" square solid bar	\$128.95

Universal Bumper Box



Fits most step bumpers with a flat mounting surface on bottom. Mounting hardware is included. 2" square receiver. Baked on black powder coating for beauty and durability. Safety chain hookup provided. ⅝" pin hole.

HABB	8½" wide bolt hole spacing	\$89.95
------	----------------------------	---------

RV Bumper Box



Note: Use of bike rack on rear of 5th wheel camper or trailer is not recommended and in most cases will void the warranty!

- Maximum bumper size: 4" by 4"
- 3,500/350 lb rating
- For use on square channel bumpers on the rear of many RV's
- Never exceed your bumper's gross towing weight

HABBRV	RV bumper box	\$129.95
--------	---------------	----------

Bolt-on Receiver Tube



- 6" long receiver tube with ⅝" pin hole
- 20,000GTW/2,000 TW
- ½" thick steel mounting plate
- 3⅜" side to side and 3½" top to bottom ½" bolt hole pattern
- Cast steel collar and a black powder coat finish.

HPMT00	Bolt-on receiver tube for 2" receivers	\$69.95
HPMT25	Bolt-on receiver tube for 2½" receivers	\$79.95



Black Rubber Cover



This cover will always be with your hitch. Simply slip the strap around your 2" square receiver tube, and you're covered. Strap also holds your 4 way flat plug.

HACB2 Rubber cover **\$13.95**

Plastic Covers



HACWD



HACN12/20

HACWD: Black plastic receiver cover with Weaver-D logo & number

HACN12/20: Black plastic smooth cover

HACWD	2" plastic receiver cover	\$1.79
	Free with \$100 order (upon request)	
HACWZ	Plastic clip, cover retainer	\$0.39
HACN12	Fits 1 1/4" receiver	\$2.99
HACN20	Fits 2" receiver	\$2.99

Shrink Wrap



MPSWH3
& MPSW5

• Ideal for wrapping all those straying parts for shipping.

MPSW5	Single roll, 5" x 700' 115 gauge, 3" core	\$8.99
	Case of 12, each (includes dispensing handle)	\$7.99
MPSW18	Single roll, 18" x 1,500', 80 gauge, 3" core	\$29.95
	Case of 4, each (no handle)	\$25.95
MPSWH3	Dispensing handle for MPSW5, each	\$2.99

Stainless Steel Locking Pins
See page 13



Reflective Hitch Step



- Fits 2" receivers
- Approximately 3" x 5" step size
- Provides easy access to rear of vehicle
- Non-slip surface, folds up when not in use
- Heavy duty, holds up to 650 lb

HAS060 Reflective Hitch Step **\$85.95**

Receiver Hitch Step



- Fits 2" receivers
- Black powder coat finish
- 6"x17" welded steel step with diamond tread. Extends your receiver by 12". Reduces hitch capacity by 1/3.

HAS4015 12" Receiver extension with step **\$82.95**

GEN-Y Hitch Step



- Fits 2" receivers
- Serrated zero-slip surface
- Heavy duty, holds up to 400 lb

HAS052 Heavy Duty Hitch Step **\$111.99**

B&W Hitch Step



- Fits 2" and 2 1/2" Tow & Stow Ballmounts
- Attaches to existing Tow & Stow hitch using 2 longer stainless steel pins (included with step)

HMSB50 Heavy Duty Hitch Step **\$130.00**

Heavy Duty Aluminum Ramps



New!

- Made in the USA!
- Hybrid hook & plate ramp ends
- Ability to hook to car hauler trailer decks
- Wide plate-style serrated cross rungs for maximum traction
- Made for low clearance single-vehicle car hauler trailers
- Sold by the pair
- 8' Ramps freight extra, Zone A/B/C, \$99/\$149/\$199, see pg. 186
- 9' & 10' Ramps LTL freight extra, Zone A/B/C, \$149/\$189/\$209, see pg. 186

ITEM#	MFG#	Length	Width	Capacity	Price
MARA572	GH-16072	6'	14"	6,000 lb.	\$417.99
MARA584	GH-16084	7'	14"	6,000 lb.	\$447.99
MARA596	GH-16096	8'	15"	10,000 lb.	\$726.99
MARA5108	GH-16108	9'	15"	10,000 lb.	\$825.99
MARA5120	GH-16120	10'	15"	10,000 lb.	\$825.99

Aluminum Ramps



- Aluminum arched construction
- 12" wide x 90" long
- Center fold for easy storage
- 1,500 lb rated as pair
- Includes safety straps
- Extra-wide non-slip cross members

MARA500	Aluminum Loading Ramps, pair	\$289.95
---------	------------------------------	----------

Lightweight Aluminum Ramps



New!



- Made in the USA!
- Hybrid Hook and Angled Traction Ends
- Sold by the pair

ITEM#	MFG#	Length	Width	Capacity	Price
MARA508	GH-18078	6.5'	12"	1,200 lb.	\$299.99

Big Bed® Junior



- Installs or removes in seconds, and easily stores flat behind the seat.
- Can be adjusted to your tail gate or roof height
- Extends 4' from receiver hitch height
- Supports up to 350 lb, and is 51" wide

HAET	Big Bed® Junior for standard 2" receiver	\$119.95
------	--	----------

Folding Cargo Carrier



HH122



HH224



- 20" wide, 60" long, and 2¾" high
- Fits standard 2" receiver (includes pin & clip)
- 500 lb capacity
- Rear of receiver tube must be at least flush with bumper

HH122	Steel, black powder coat, weighs 35 lb	\$157.95
HH224	Aluminum, weighs 28 lb	\$189.95

Hitch Hauler



- Constructed of aluminum, rated to 500 lb
- Folding shank allows carrier to be tilted up
- Non-skid ridges provide enhanced traction
- Fits standard 2" receiver hitches
- Threaded anti-rattle shank to resist sway and suppress noise
- Freight extra to zone A/B/C = \$59/\$79/\$99

HHSH308	Inside 50" long, 30½" wide, 4" high	\$457.95
---------	-------------------------------------	----------

Large Basket Cargo Carrier



- 500 lb capacity
- Powder coat finish

HH128	24" x 60" x 6" Bolt-together design, 2" receiver	\$239.95
-------	--	----------

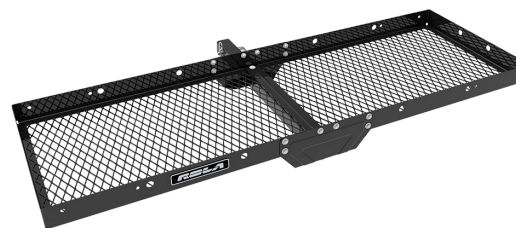
Hitch Stabilizer



- Stabilizes hitch mounted bike racks
- Vinyl coated hook prevents scratches on painted surfaces

HAAS22	Strap with Quick Release Cam Buckle	\$15.95
--------	-------------------------------------	---------

Cargo Carrier



- Fits standard 2" receiver
- 300 lb capacity on 1¼" receiver
- 500 lb capacity on 2" receiver
- Includes anti-rattle device

HH139	20" x 60" Fits 2" & 1¼" receiver	\$79.95
-------	----------------------------------	---------

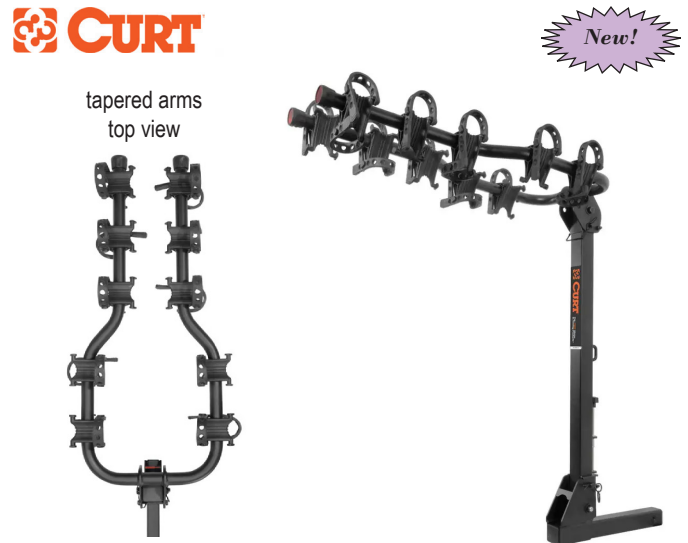
Tilt Bike Carriers



- Soft cradles protect bike paint
- Includes anti-rattle hitch pin
- Tilt down for access to trunks, rear doors, hatches.
- HB203/403: (2) Velcro straps secure each bike
- HB425: Locking knob deters theft of your bikes

HB203	2 Bike Rack, fits 1 1/4" receivers	\$149.95
HB403	4 Bike Rack, fits 2" receivers	\$265.95
HB425	4 Bike Rack, fits 1 1/4" & 2" receivers	\$336.95

Deluxe Tilt Bike Carriers



- Tilt down for access to trunks, rear doors, hatches.
- Clamps accommodate most styles of bikes and holds bikes securely in place. (up to 2" diameter cross bar)
- Tapered arms accommodate multiple bike sizes, including kids' bikes
- Includes anti-rattle device/hitch pin

HB497	5 Bike Rack, fits 2" receivers	\$335.95
-------	--------------------------------	----------

Note: Use of bike rack on rear of 5th wheel camper or trailer is not recommended & in most cases will void the warranty! (Except HB202) 14" minimum recommended ground clearance for all bike racks (except HB422)

Platform Style Bike Carriers



HB202



HB422



- Accommodates all styles of bikes
- Ratcheting arms easily adjust to different size bike frames
- Upright posts fold down allowing rack to fold up to back of vehicle
- Easily folds for compact storage
- HB202: Threaded anti-wobble shank
- Tilts away for convenient access to trunk or hatch
- Support strap required with 1 1/4" receiver tube
- HB422 includes locking anti-rattle hitch pin and lock cable. 35lbs capacity per bike.

HB202	2 bike rack, fits 1 1/4" & 2" receivers	\$275.95
HB422	4 bike rack, fits 2" receivers	\$441.00

Platform Style 2 Or 4 Bike Carrier



- Accommodates all styles of bikes
- Easily separates to be used as a 2 or 4 biker
- Fits 1 1/4" or 2" when used as a 2 biker & 2" when used as 4 biker
- Easily adjusts to different size bike frames by tightening knobs
- Upright posts fold down when not carrying bikes
- Easily folds for compact storage
- Includes anti-rattle device/hitch pin

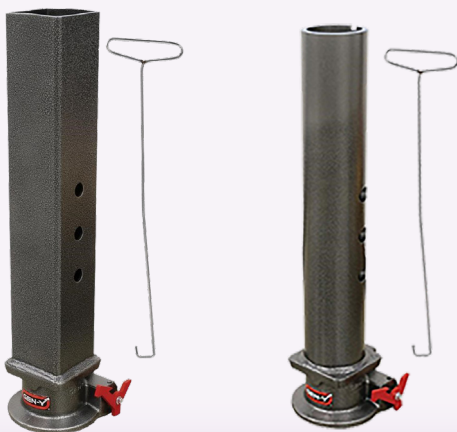
HB423	2 or 4 Bike Carrier	\$429.95
-------	---------------------	----------

InfiniteRule Security Locks:

- CUSTOM FIT - Specifically Designed & Intended For Listed Application
- HIGHEST QUALITY - Anti Theft Machined Stainless-Steel Locks & Pins Rigorously Tested By Trusted 3rd Party Solutions
- Weatherproof Rubber Cap And O-ring To Protect The Key Hole From Water, Grime, Dirt, & Debris
- 100% MADE IN THE USA

See page 13, 31

GEN-Y VIKING Gooseneck Couplers See page 143



Curt PowerRide OEM Puck 5th Wheel See page 139



Anti-Rattle Hitch Clamp



HAAR25

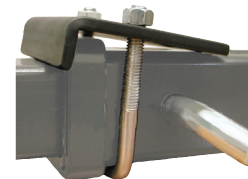


HAAR25 in use

- Stops rattling and prevents shank movement for a quieter ride
- Revolutionary No-tool design
- Easily adjust and hand tighten with powerful clamp lever

HAAR20	2" Anti-rattle Hitch Clamp	\$25.95
HAAR25	2½" Anti-rattle Hitch Clamp	\$32.95

Clamp Anti-Rattle Device

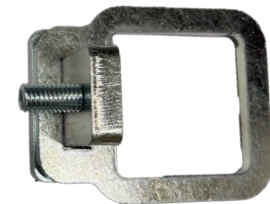


HAAR03 in use

- Reduce draw bar & ball mount rattle while you drive

HAAR03	2" Heavy Duty Anti-rattle	\$24.95
--------	---------------------------	---------

B&W Hitch Silencers



HAAR40

- Reduce draw bar & ball mount rattle while you drive
- Hitch Silencers not compatible with:
 - Any Multi-Pro Tow & Stow ballmount
 - Any receiver reducer sleeves
 - Any weight distribution hitch

HAAR40	2" Hitch Silencer	\$30.00
HAAR42	2½" Hitch Silencer	\$35.00
HAAR43	3" Hitch Silencer	\$40.00