

Tubular Ball Mounts



•Fits 2" receiver

- 1" ball hole
- Uses 5/8" pin & clip (not included)
- Tongue Weight is 10% of capacity
- Length is measured from pin hole to ball hole
- Heavy duty Black Powder Coated tubular steel

2" Drop Tubular Ball Mounts

HMT202	2" drop, 7½" long	7,500 lb capacity	\$15.95
HMT202L	2" drop, 10¼" long	7,500 lb capacity	\$17.95
HMT202XL	2" drop, 12¼" long	7,500 lb capacity	\$36.95

4" Drop Tubular Ball Mounts

HMT204	4" drop, 8¾" long	7,500 lb capacity	\$16.95
HMT204L	4" drop, 10¼" long	7,500 lb capacity	\$18.95
HMT204XL	4" drop, 13" long	7,500 lb capacity	\$46.95

6" Drop Tubular Ball Mounts

HMT206	6" drop, 9¾" long	7,500 drop, 6,000 rise	\$24.95
HMT206L	6" drop, 12¼" long	7,500 drop, 6,000 rise	\$29.95
HMT206XL	6" drop, 14¼" long	7,500 drop, 6,000 rise	\$48.95

8-10" Drop Tubular Ball Mounts

HMT208	8" drop, 11½" long	5,000 drop, 3,500 rise	\$32.95
HMT208L	8" drop, 13" long	5,000 drop, 3,500 rise	\$55.95
HMT210	10" drop, 13" long	5,000 drop, 3,500 rise	\$68.95

10K Tubular Ball Mounts



•Fits 2" receiver

- 1¼" ball hole
- Uses 5/8" pin & clip (not included)

HMT232	2" drop, 8½" long	10,000 lb capacity	\$34.95
HMT234	4" drop, 9" long	10,000 lb capacity	\$44.95
HMT236	6" drop, 9" long	10,000 lb capacity (drop only)	\$49.95

Forged Aluminum Ball Mount



•Fits 2" receiver

- 1" ball hole
- Uses 5/8" pin & clip (not included)
- Solid aluminum shank
- See page 14 for Stainless Steel hitch balls with 1" shank

HMSA201	2" drop, 8½" long, 8,000 lb capacity	\$72.95
---------	--------------------------------------	---------

Loaded Ball Mounts

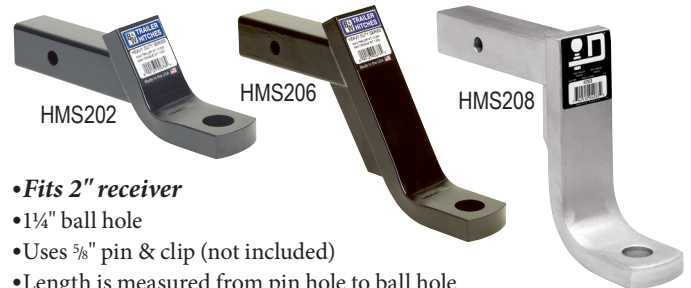


•Fits 2" receiver

- Includes 5/8" pin & clip

HMT272	2" ball	2" drop, 7½" length	7,500/750	\$26.95
HMT274	2" ball	4" drop, 8¾" length	7,500/750	\$27.95
HMT273	2½" ball	2" drop, 8¾" length	7,500/750	\$49.95
HMT275	2½" ball	4" drop, 8¾" length	7,500/750	\$37.95

Solid Steel Ball Mounts



•Fits 2" receiver

- 1¼" ball hole
- Uses 5/8" pin & clip (not included)
- Length is measured from pin hole to ball hole
- Black powder coated (except HMS208)

2" Drop Solid Steel Ball Mounts

HMS202	2" drop, 8½" long	16,000 lb capacity	\$61.95
HMS202L	2" drop, 10¼" long	16,000 lb capacity	\$67.95

4" Drop Solid Steel Ball Mounts

HMS204	4" drop, 9¾" long	16,000 lb capacity	\$69.95
HMS204L	4" drop, 11¾" long	16,000 lb capacity	\$77.95

6" Drop Solid Steel Ball Mount

HMS206	6" drop, 10¾" long	16,000 lb capacity	\$82.95
--------	--------------------	--------------------	---------

8" Drop Solid Steel Ball Mount

HMS208	8" drop, 10" long	12,000 lb capacity	\$73.95
--------	-------------------	--------------------	---------

2½" Ball Mounts



•Fits 2½" receiver

- 1¼" ball hole
- Uses 5/8" pin & clip. (not included)
- Length is measured from pin hole to ball hole

HMT252	2" drop	8½" long	16,000GTW, 1,600TW	\$68.95
HMT254	4" drop	9¾" long	16,000GTW, 1,600TW	\$72.95
HMT256	6" drop	10¾" long	16,000GTW, 1,600TW	\$88.95
HMT258	7¾" drop	10" long	15,000GTW, 1,500TW	\$65.95

Double & Triple Tow & Forged Ball Mounts



Triple Tow Ball Mounts



- 1½", 2", and 2½" hitch balls
- **Fits 2" receiver**
- Uses ⅝" pin & clip (not included)
- Solid shank unless noted
- HMT20TL has a tubular shank
- HMS20T0 has chrome balls and a 7,500 lb cast steel pintle jaw
- HMS20TP has a cushioned draw bar to give you smoother towing

ITEM#	Ball Type	2½"	2"	1½"	Price
HMT20TL	Black	10,000	7,500	5,000	\$49.95
HMS20TL	Black	10,000	7,500	5,000	\$74.95
HMS20TH	Black	16,000	10,000	2,000	\$119.95
HMS20TC	Chrome	10,000	7,500	5,000	\$89.95
HMS20T0	Pintle	10,000	7,500	6,000	\$130.95
HMS20TP	Cushion	10,000	10,000	2,000	\$166.95

- **Fits 2½" receiver**
- Uses ⅝" pin & clip (not included).
- 7¼" shank for 1½" and 2" ball, 8¼" shank for 2½" ball

ITEM#	Ball Type	2½"	2"	1½"	Price
HMT25TL	Black	14,000	10,000	2,000	\$59.95

Double Tow Ball Mounts



- **Fits 2" receiver**
 - Uses ⅝" pin & clip (not included)
 - HMTD201: tubular shank
- | | | |
|---------|---|---------|
| HMTD201 | 2" ball on top, 2½" ball on bottom (6,000 lb) | \$51.95 |
| HMSD201 | 2"(7,500 lb) & 2½"(10,000) ball, solid shank | \$72.95 |
| HMSD202 | 2"(10,000 lb) & 2½"(16,000) ball, solid shank | \$67.95 |

Forged Ball Mounts



- 1¼" ball hole
- Length is measured from pin hole to ball hole
- **Fits 2" receiver**
- Uses ⅝" pin & clip (not included)

HMS902	2" drop, 7⅝" long	20,000/2,000 lb capacity	\$40.95
HMS904	4" drop, 7⅝" long	20,000/2,000 lb capacity	\$49.95
HMS906	6" drop, 9⅝" long	17,000/1,700 lb capacity	\$55.95
HMS922	2" drop, 8½" long	17,000/2,550 lb capacity	\$66.95
HMS924	4" drop, 8½" long	17,000/2,550 lb capacity	\$83.95
HMS926	6" drop, 9½" long	17,000/2,550 lb capacity	\$114.95

- **Fits 2½" receiver**
- Uses ⅝" pin & clip. (not included)

HMS952	2" drop 8½" long	20,000GTW, 2,700TW	\$77.95
HMS954	4" drop 8½" long	20,000GTW, 2,700TW	\$88.95
HMS956	6" drop 9" long	20,000GTW, 2,700TW	\$159.95
HMS958	8" drop 10" long	20,000GTW, 2,700TW	\$199.95

- **Fits 3" receiver**
- Uses long ⅝" pin & clip HARPL (Not included)

HMS934	4" drop 9" long	21,000GTW/2,800TW	\$149.95
HMS936	6" drop 10" long	21,000GTW/2,800TW	\$181.95
HMS938	8" drop 10½" long	21,000GTW/2,800TW	\$213.95

Cushioned Ball Mounts



- Enclosed polypropylene cushions act as shock absorbers and reduce bouncing and jerking, giving you and your pickup a smoother ride
- Uses ⅝" pin & clip. (Not included)

- **Fits 2" receiver**
- | | | | |
|-------|-----------------------|--------------------|----------|
| HCM2 | 2" drop 1" ball hole | 10,000GTW/2,000 TW | \$86.95 |
| HCMH2 | 2" drop 1¼" ball hole | 14,000GTW/2,000 TW | \$124.95 |
- **Fits 2½" receiver**
- | | | | |
|---------|-----------------------|--------------------|----------|
| HCMV252 | 2" drop 1¼" ball hole | 18,000GTW/2,000 TW | \$137.95 |
| HCMV254 | 4" drop 1¼" ball hole | 18,000GTW/2,000 TW | \$147.95 |

Adjustable/Convert-A-Ball Ball Mounts



- HPH1: Stainless steel 3-ball combination & pintle sleeve; 10,000GTW/2,000TW with interchangeable balls; 25,000GTW/5,000TW with pintle sleeve; mounting hardware included.
 - Compatible with shank bars on page 165
 - Use HW036 with HPH1 for an adjustable height pintle/ ball combo
- | | | |
|--------------|--|----------|
| HW032 | Ball mount adapter, 1" ball hole, 10,000/2,000 | \$46.95 |
| HW036 | Pintle 4-bolt adapter plate, 10,000/2,000 | \$53.95 |
| HW039 | Pair of 3/4" pins & clips for HW032/34/36 | \$13.95 |
| HPH1 | Pintle convert-a-ball combo | \$349.95 |

Adjustable Ball Mounts



- Fits 2" receiver**
 - Uses 5/8" pin and clip (not included)
 - 11" drop with ball plate down, and in lowest hole
 - Adjustable ball mounts can be used in rise position
 - Ball plate attaches with two 5/8" pins for easy adjustment
 - Tongue weight rating is 10% of capacity
- | | | |
|----------------|--|----------|
| HMT20A | 1" ball hole, 13" length, 6,000 lb capacity | \$59.95 |
| HMS210A | 1" ball hole, 12 3/4" length, 10,000 lb capacity | \$116.95 |
| HMT20B | Extra ball plate for HMT20A | \$35.95 |

Receiver Tow Hooks



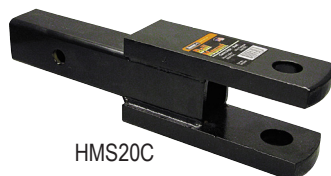
- Fits 2" receiver unless noted otherwise**
 - Do not exceed receiver hitch capacity
 - Use 5/8" receiver pin & clip (not included)
- | | | |
|----------------|--|---------|
| HATH5 | Forged tow hook | \$63.95 |
| HATH12 | Forged tow eye, 12K straight line pull | \$42.95 |
| HATH326 | 2" receiver 3/4" shackle, 9,500 WLL | \$74.95 |
| HATH327 | *2 1/2" receiver* 3/4" shackle, 13,000 WLL | \$79.95 |

Class 1 & 2 Ball Mounts



- Fits 1 1/4" receiver**
 - 3/4" ball hole
 - Uses 1/2" pin & clip (not included)
 - 3,500 lb Gross Trailer Weight
 - Length is measured from pin hole to ball hole
- | | | |
|----------------|-------------------------|---------|
| HMS122 | 1 1/4" drop 7" long | \$34.95 |
| HMS122L | 1 1/4" drop 9 3/4" long | \$38.95 |
| HMS124 | 3 1/2" drop 7 1/4" long | \$39.95 |
| HMS124L | 4" drop 10" long | \$32.95 |
| HMS125 | 5" rise only 10" long | \$32.95 |
| HMS126 | 6 3/4" drop 7 1/4" long | \$47.95 |

Clevis Mount



- Fits 2" receiver**
 - 1" diameter clevis pin holes
 - Uses 5/8" receiver pin & clip (not included)
 - Do not exceed receiver hitch capacity
- | | | |
|---------------|--|---------|
| HMS20C | Solid steel clevis mount, 8K | \$49.95 |
| HARPP1 | 1" Clevis tongue pin, poly-coated handle | \$10.95 |

ATV Ball mount



- | | | |
|----------------|-----------------------------------|---------|
| HMATVS4 | Fits 2" ATV receiver, has 2" ball | \$53.95 |
|----------------|-----------------------------------|---------|

WeighSafe Adjustable Ball Mounts



180° Aluminum Ball Mounts



HMSW708

- Aluminum shank
- Stainless steel balls
- 180° model does not include built-in tongue weight scale
- Includes dual pin lock assembly and keyed alike SS receiver lock
- Limited Lifetime Warranty

• Fits 2" receiver

- 2" ball: 8,000 GTW, 1,500 TW
- 2 5/16" ball: 12,500 GTW, 1,500 TW

HMSW704	4" drop	\$299.00
HMSW706	6" drop	\$299.00
HMSW708	8" drop	\$319.00
HMSW710	10" drop	\$339.00

• Fits 2½" receiver

- 2" ball: 8,000 GTW, 2,200 TW
- 2 5/16" ball: 18,500 GTW, 2,200 TW

HMSW756	6" drop	\$329.00
HMSW758	8" drop	\$349.00
HMSW759	10" drop	\$369.00

• Fits 3" receiver

- 2" ball: 8,000 GTW, 2,200 TW
- 2 5/16" ball: 21,000 GTW, 2,200 TW

HMSW736	6" drop	\$369.00
HMSW738	8" drop	\$389.00
HMSW739	10" drop	\$399.00

Aluminum Ball Mounts



HMSW806



- Built-in tongue weight scale
- Aluminum shank
- Stainless steel balls
- Includes dual pin lock assembly and keyed alike SS receiver lock
- Limited Lifetime Warranty

• Fits 2" receiver

- 2" ball: 8,000 GTW, 1,500 TW
- 2 5/16" ball: 12,500 GTW, 1,500 TW

HMSW804	4" drop	\$339.00
HMSW806	6" drop	\$359.00
HMSW808	8" drop	\$369.00
HMSW810	10" drop	\$389.00

• Fits 2½" receiver

- 2" ball: 8,000 GTW, 2,200 TW
- 2 5/16" ball: 18,500 GTW, 2,200 TW

HMSW856	6" drop	\$379.00
HMSW858	8" drop	\$389.00
HMSW859	10" drop	\$409.00

• Fits 3" receiver

- 2" ball: 8,000 GTW, 2,200 TW
- 2 5/16" ball: 21,000 GTW, 2,200 TW

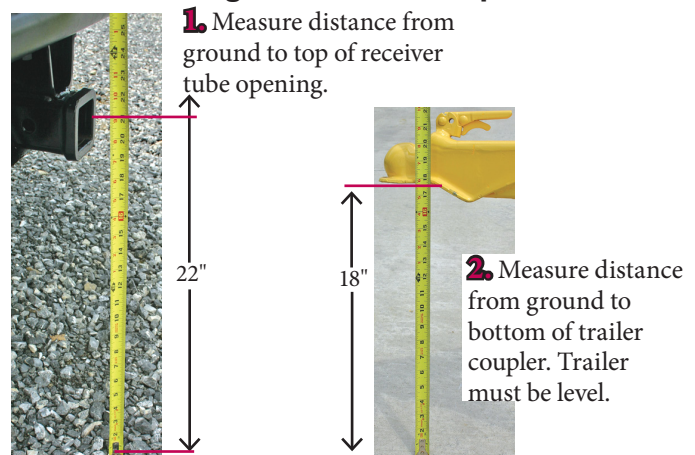
HMSW836	6" drop	\$429.00
HMSW838	8" drop	\$449.00
HMSW839	10" drop	\$459.00

Combo Hitch Lock



HMSW700	Replacement receiver and dual pin lock	\$50.00
HMSW701	Dual pin key lock assembly only	\$20.00

Calculating Ball Mount Drop Needed



3. Subtract trailer coupler height from receiver tube height to calculate amount of ball mount drop needed. (Opposite for rise) (Be sure to figure in the vehicle sag that will occur when trailer tongue weight is applied to vehicle)



Fastway Adjustable Ball Mounts

Locking Aluminum Ball Mounts



- 2" & 2 $\frac{5}{16}$ " balls
- 10,000/8,000 GTW, 1,000 TW
- Polished aluminum
- Built-in anti-rattle
- Built-in receiver lock with keys
- Can be flipped under vehicle
- 1 year warranty
- **Fits 2" receiver**

HMSA406



HMSA406 6" drop **\$291.95**

- **Fits 2 $\frac{1}{2}$ " receiver**

HMSA506 6" drop **\$323.95**

Integrated Scale Aluminum Ball Mount



- **Fits 2" receiver**
- Polished aluminum
- Stunning good looks
- Lightning quick adjustment
- Built-in mechanical tongue weight scale!
- Proper tongue weight gives better steering, braking, & reduced sway
- 2" ball: 8,000 GTW, 800 TW
- 2 $\frac{5}{16}$ " ball: 10,000 GTW, 1,000 TW
- 1 year warranty

HMSA806



HMSA806 6" drop **\$326.95**

Keyed-Alike Locking Pin Set



HMSA700



HMSA750

- Only for use with FLASH aluminum ballmounts

HMSA700 Keyed-Alike Locking Pin Set for 2" FLASH **\$54.95**

HMSA750 Keyed-Alike Locking Pin Set for 2.5" FLASH **\$61.95**

Pin Style Aluminum Ball Mounts



- Polished aluminum
- Stunning good looks
- Lightning quick adjustment
- Can be flipped under vehicle
- 1 year warranty
- **Fits 2" receiver**
- 2" ball: 8,000 GTW, 1,000 TW
- 2 $\frac{5}{16}$ " ball: 10,000 GTW, 1,000 TW

HMSA706



HMSA704 4" drop **\$242.95**

HMSA706 6" drop **\$242.95**

HMSA708 8" drop **\$252.95**

HMSA710 10" drop **\$237.95**

- **Fits 2 $\frac{1}{2}$ " receiver**

• 2" ball: 12,000 GTW, 1,200 TW

• 2 $\frac{5}{16}$ " ball: 18,000 GTW, 1,800 TW

HMSA756 6" drop **\$272.95**

HMSA758 8" drop **\$282.95**

HMSA759 10" drop **\$282.95**

FLASH Steel Ball Mounts



HMSD706

- Glossy black powder coated
- 2" and 2 $\frac{5}{16}$ " balls
- No tools needed to adjust height
- Solid forged steel construction
- 1 year warranty
- **Fits 2" receiver**

HMSD706 6" drop 12,000/8,000 GTW 1,200 TW **\$242.95**

HMSD710 10" drop 12,000/8,000 GTW 1,200 TW **\$252.95**

HMSD700 Locking pin set for receiver and ball adjustment **\$54.95**

- **Fits 2 $\frac{1}{2}$ " receiver**

HMSD756 20,000/12,000 GTW 2,000 TW 6" drop **\$272.95**

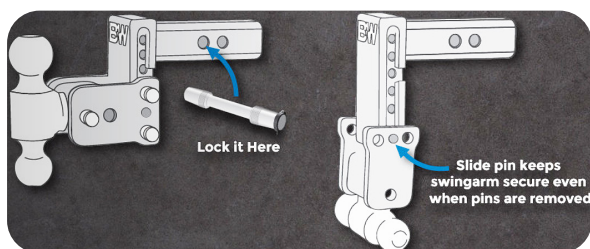
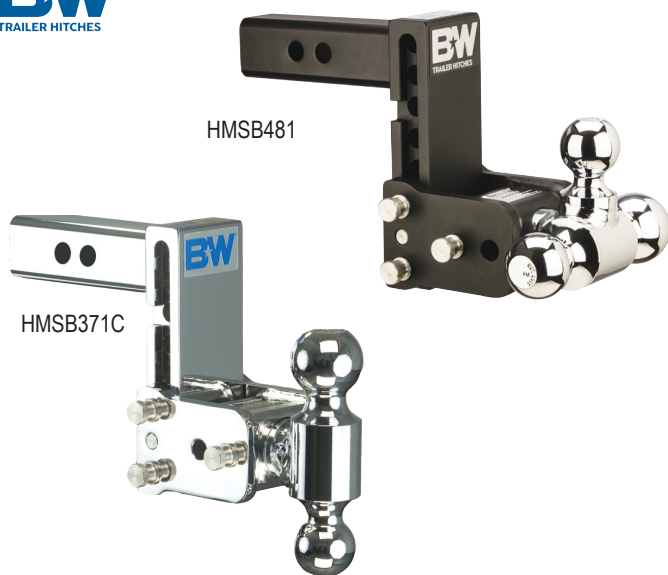
HMSD759 20,000/12,000 GTW 2,000 TW 10" drop **\$282.95**

HMSD750 Locking pin set for receiver and ball adjustment **\$61.95**

B&W Tow & Stow Adjustable Ball Mounts



Tow & Stow



•Stows under vehicle when not in use

•Fits 2" receiver

•Ball Ratings: 1 7/8" (3,500 lb), 2" (7,500 lb) & 2 5/16" (10,000 lb)

ITEM#	MFG#	Color	Drop	Ball Sizes	Price
HMSB331	TS10033B	Black	3"	2", 2 5/16"	\$239.00
HMSB471	TS10047B	Black	3"	1 7/8", 2", 2 5/16"	\$249.00
HMSB371	TS10037B	Black	5"	2", 2 5/16"	\$269.00
HMSB481	TS10048B	Black	5"	1 7/8", 2", 2 5/16"	\$279.00
HMSB401	TS10040B	Black	7"	2", 2 5/16"	\$299.00
HMSB491	TS10049B	Black	7"	1 7/8", 2", 2 5/16"	\$309.00
HMSB431	TS10043B	Black	9"	2", 2 5/16"	\$349.00
HMSB371C	TS10037C	Chrome	5"	2", 2 5/16"	\$329.00
HMSB481C	TS10048C	Chrome	5"	1 7/8", 2", 2 5/16"	\$339.00

•Fits 2 1/2" receiver

•Ball Ratings: 1 7/8" (3,500 lb), 2" (7,500 lb) & 2 5/16" (18,000 lb)

HMSB372	TS20037B	Black	5"	2", 2 5/16"	\$309.00
HMSB482	TS20048B	Black	5"	1 7/8", 2", 2 5/16"	\$319.00
HMSB402	TS20040B	Black	7"	2", 2 5/16"	\$349.00
HMSB492	TS20049B	Black	7"	1 7/8", 2", 2 5/16"	\$359.00
HMSB432	TS20043B	Black	9"	2", 2 5/16"	\$389.00

•Fits 3" receiver

•Ball Ratings: 2" (7,500 lb) & 2 5/16" (21,000 lb)

HMSB373	TS30037B	Black	5"	2", 2 5/16"	\$349.00
HMSB483	TS30048B	Black	5"	1 7/8", 2", 2 5/16"	\$359.00
HMSB403	TS30040B	Black	7"	2", 2 5/16"	\$379.00
HMSB493	TS30049B	Black	7"	1 7/8", 2", 2 5/16"	\$399.00



MultiPro Tow & Stow



•Stows under vehicle when not in use

•Specially designed for use with GMC/Chevy MultiPro tailgate

•Fits 2" receiver

•Ball Ratings: 2" (7,500 lb) & 2 5/16" (10,000 lb)

ITEM#	MFG#	Color	Drop	Ball Sizes	Price
HMSB405	TS20066BMP	Black	7"	2", 2 5/16"	\$349.00

•Fits 2 1/2" receiver

•Ball Ratings: 2" (7,500 lb) & 2 5/16" (18,000 lb)

HMSB404	TS20066BMP	Black	7"	2", 2 5/16"	\$389.00
---------	------------	-------	----	-------------	----------

Tow & Stow Pin Surround Lock



•Attaches to side of B&W Tow & Stow

•Surrounds 3 adjustment pins for security

HMSB109	TS51241	3 pin lock for Tow & Stow	\$39.95
---------	---------	---------------------------	---------

Replacement Pin & Clip



HMSB101	TS35010	Replacement Pin & Clip for 2" & 2 1/2" Tow & Stow	\$12.95
---------	---------	---	---------

HMSB102	TS35011	Replacement Pin & Clip for 3" Tow & Stow	\$15.95
---------	---------	--	---------

Drawbar & Clevis Attachments



HMSB001

HMSB021

•Not intended to be used as a ball mount

HMSB001	TS35100B	Draw bar Attachment for 2" Tow & Stow	\$74.95
---------	----------	---------------------------------------	---------

HMSB002	TS35200B	Draw bar Attachment for 2 1/2" Tow & Stow	\$86.95
---------	----------	---	---------

HMSB003	TS35300B	Drawbar attachment for 3" Tow & Stow	\$98.95
---------	----------	--------------------------------------	---------

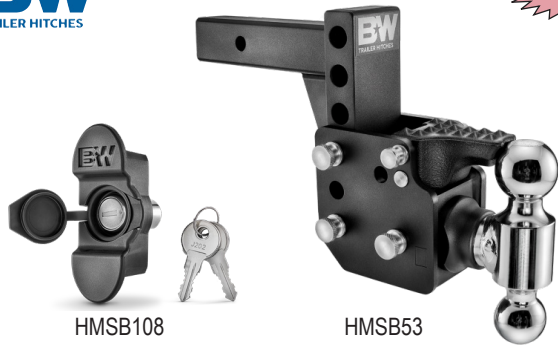
HMSB021	TS35105B	Clevis Attachment for 2" Tow & Stow	\$99.95
---------	----------	-------------------------------------	---------

HMSB022	TS35205B	Clevis Attachment for 2 1/2" Tow & Stow	\$109.95
---------	----------	---	----------



Curt Adjustable Ball Mounts

Adjustable Duplex Pintle



- 2" and 2 $\frac{5}{16}$ " balls, and pintle all in 1 unit
 - HMSB108: Fits HMSB53/532, Lock inserts into hole between 2 height adjustment pins and holds them securely in place
 - **Fits 2" receiver**
- | ITEM# | Drop | 2 $\frac{5}{16}$ " | 2" | Price |
|---------|---|--------------------|----|----------|
| HMSB53 | Adjustable Duplex Pintle, 16,000 lb. hook | | | \$349.00 |
| HMSB532 | Adjustable Duplex Pintle, 21,000 lb. hook | | | \$389.00 |
| HMSB108 | Dual ball pintle pin lock | | | \$39.95 |

Infinite Rule Lock Kits



- Keyed alike, see below for more details
- | ITEM# | Description | Price |
|---------|--|----------|
| HRL1075 | Hitch head lock for 2" & 2 $\frac{1}{2}$ " Tow & Stow | \$42.95 |
| HRL1675 | (3) hitch head locks for 2" & 2 $\frac{1}{2}$ " Tow & Stow | \$125.95 |
| HRL1775 | (3) hitch head locks & (1) receiver lock for 2" & 2 $\frac{1}{2}$ " Tow & Stow | \$164.95 |
| HRL1781 | (3) hitch head locks & (1) receiver lock for 3" Tow & Stow | \$181.45 |

InfiniteRule Security Locks:

- Custom fit- Specifically designed & intended for listed application
- Highest quality - Anti-theft machined stainless steel locks & pins rigorously tested by trusted 3rd party solutions
- Weatherproof rubber cap and O-ring to protect the key hole from water, grime, dirt, & debris
- 100% Made in the USA

See pages 9, 10, 12, 13, 30 & 160

Adjustable Dual Ball Mounts



- Built-in anti-rattle helps promote quiet towing
- Dual ball can be used on other weight distributing shanks
- $\frac{3}{4}$ " holes in ball head spaced 2 $\frac{1}{2}$ " center to center
- **Fits 2" receiver**

ITEM#	Drop	2 $\frac{5}{16}$ "	2"	Price
HMSD360	5 $\frac{1}{2}$ " drop	15K	10K	\$259.95
HMSD362	10" drop	15K	10K	\$354.95
HMSD361	Replacement dual ball head with pins for HMSD360/362			\$165.95

- **Fits 2 $\frac{1}{2}$ " receiver**

- HMSD372: not intended for use in rise position

ITEM#	Drop	2 $\frac{5}{16}$ "	2"	Price
HMSD370	5 $\frac{1}{2}$ " drop	20K	10K	\$342.95
HMSD372	11 $\frac{3}{4}$ " drop	20K	10K	\$425.95

Rebellion Cushioned Ball Mounts



- Cushioned with heavy duty ShockDrop™ technology
- Dampens jerking and jarring for smoother tow
- HMSD236 has standard 3 $\frac{3}{8}$ " by 1 $\frac{1}{4}$ " bolt pattern, 4 bolts included
- **Fits 2" receiver**

HMSD230	2" & 2 $\frac{5}{16}$ " balls w/ adjustable shank, 15,000	\$531.95
HMSD236	Pintle mount plate for HMSD230	\$99.95

- **Fits 2 $\frac{1}{2}$ " receiver**

- 8" drop, 1" rise, shank cannot be used upside down

HMSD330	2" & 2 $\frac{5}{16}$ " balls with adjustable shank, 20,000	\$767.95
---------	---	----------

Curt Adjustable Ball Mounts



Adjustable Channel Mounts



HMSD205



HMSD215

HMSD356

- Includes 5/8" receiver pin and clip
- 2 pin holes give the option of 10 1/4" or 11 1/4" length

•Fits 2" receiver

HMSD205	6" drop, 2" & 2 5/16" balls & shank, 14,000	\$259.95
HMSD206	10" drop, 2" & 2 5/16" balls & shank, 14,000	\$514.95
HMSD215	Replacement dual ball head for HMSD205/206	\$116.95

•Fits 2 1/2" receiver

HMSD305	6" drop, 2" & 2 5/16" balls with shank, 20,000	\$389.95
HMSD306	10" drop, 2" & 2 5/16" balls with shank, 20,000	\$589.95
HMSD315	Replacement dual ball head for HMSD305/306	\$169.95

•Fits 3" receiver

HMSD356	10" drop, 2" & 2 5/16" balls & shank, 21,000	\$610.95
----------------	--	----------

Adjustable Pintle Mounts



HMSD309



HMSD209



HMSD216

- Includes 5/8" receiver pin and clip
- 2 pin holes give the option of 10 1/4" or 11 1/4" length

•Fits 2" receiver

HMSD209	6" drop, 2 5/16" duplex pintle & shank, 13,000 lb	\$359.95
HMSD217	2" duplex pintle only, 10,000 lb capacity	\$199.95
HMSD216	2 5/16" duplex pintle only, 13,000 lb capacity	\$205.95

•Fits 2 1/2" receiver

HMSD309	6" drop, 2 5/16" duplex pintle & shank, 20,000 lb	\$475.95
HMSD316	2 5/16" duplex pintle only, 20,000 GTW	\$239.95

Infinite Rule Lock Kits



HRL1806

- Each kit includes (2) hitch locks and (1) receiver lock
- Keyed alike, see page 9 for more details

HRL1806	Keyed alike lock set for Curt 13K & 14K channel mounts	\$124.95
HRL1801	Keyed alike lock set for Curt 20K channel mounts	\$125.95
HRL1662	Keyed alike lock set for Curt Deep Drop ballmounts	\$135.95
HRL1657	Keyed alike lock set for Curt Rebellion ballmounts	\$134.95

Adjustable Channel Mount Accessories



HMSD218



HMSD213



HMSD312

- HMSD218/318: 9 holes vertical adjustment

HMSD218	2" Adjustable shank only, 14K	\$153.95
HMSD318	2 1/2" Adjustable shank only, 14K	\$235.95
HMSD213	Locking Pin Set (2" & 2 1/2" receiver and channel)	\$99.95
HMSD312	Replacement pair of pins, 2" & 2 1/2" receiver	\$29.95

Alumalite Ball Mounts



HMSA445

•Fits 2" receiver

- 2" ball: 8,000 GTW
- 2 5/16" ball: 12,500 GTW, (except 9 1/2" drop) 10,000 GTW
- Lightweight, corrosion-resistant billet aluminum construction
- Dual ball constructed from high-strength steel with a polished finish
- Limited Lifetime Warranty

HMSA443	3 1/2" drop	\$319.95
HMSA445	5 1/2" drop	\$329.95
HMSA447	7 1/2" drop	\$354.95
HMSA449	9 1/2" drop	\$399.95
HMSD213	Locking Pin Set (receiver and channel)	\$99.95

GEN-Y Mega-Duty Ball Mounts



HMSG524

- Super heavy duty construction
- 2" and 2 $\frac{5}{16}$ " balls, and pintle all in 1 unit
- 100% Satisfaction Guaranteed!
- **Fits 2" receiver**

HMSG324	10,000 GTW	1,500 TW	7.5" drop	\$319.95
HMSG523	16,000 GTW	2,000 TW	5" drop	\$339.95
HMSG524	16,000 GTW	2,000 TW	7.5" drop	\$359.95
HMSG525	16,000 GTW	2,000 TW	10" drop	\$379.95

• Fits 2 $\frac{1}{2}$ " receiver

HMSG623	21,000 GTW	3,000 TW	6" drop	\$459.95
HMSG1623	32,000 GTW	3,500 TW	6" drop	\$509.95
HMSG624	21,000 GTW	3,000 TW	9" drop	\$479.95
HMSG625	21,000 GTW	3,000 TW	12" drop	\$509.95

• Fits 3" receiver

HMSG1723	32,000 GTW	3,500 TW	6" drop	\$539.95
HMSG1724	32,000 GTW	3,500 TW	9" drop	\$559.95
HMSG1725	32,000 GTW	3,500 TW	12" drop	\$579.95

GEN-Y Mega-Duty Offset Ball Mounts



- Super heavy duty construction
- 2" and 2 $\frac{5}{16}$ " balls, and pintle all in 1 unit
- 100% Satisfaction Guaranteed!
- Offset shank
- **Fits 2" receiver**

HMSG224	16,000 GTW	2,000 TW	2 $\frac{1}{2}$ " rise 5" drop	\$369.95
---------	------------	----------	--------------------------------	----------

• Fits 2 $\frac{1}{2}$ " receiver

HMSG924	21,000 GTW	3,000 TW	3" rise 6" drop	\$519.95
HMSG1924	32,000 GTW	3,500 TW	3" rise 6" drop	\$549.95

• Fits 3" receiver

HMSG2024	32,000 GTW	3,500 TW	3" rise 6" drop	\$599.95
----------	------------	----------	-----------------	----------

GEN-Y Boss Torsion Ball Mounts



HMSG1225

- Super heavy duty construction
- Heavy duty rubber torsion-flex cords
- Choose model according to TW for optimum performance
- 2" and 2 $\frac{5}{16}$ " balls, and pintle all in 1 unit
- 2" ball is rated to 10,000 GTW
- 100% Satisfaction Guaranteed!
- 5-year torsion warranty; Lifetime workmanship warranty!
- **Fits 2" receiver**

HMSG1024	10,000 GTW	500-1,100 TW	5" drop	\$699.95
HMSG1225	16,000 GTW	800-1,700 TW	7.5" drop	\$779.95

• Fits 2 $\frac{1}{2}$ " receiver

HMSG1124	16,000 GTW	1,000-1,700 TW	5" drop	\$819.95
HMSG1125	16,000 GTW	1,000-1,700 TW	7 $\frac{1}{2}$ " drop	\$839.95
HMSG1324	21,000 GTW	1,500-2,400 TW	6" drop	\$949.95
HMSG1325	21,000 GTW	1,500-2,400 TW	9" drop	\$979.95

GEN-Y Phantom-XT Torsion-Flex Hitch



- Built-In suspension creates up to a 90% smoother ride
- Shock absorption protects cargo from harsh bumps
- 100% Satisfaction Guaranteed!
- **Fits 2" receiver**

HMSG1041	10,000 GTW	400-1,000 TW	4 $\frac{1}{4}$ " drop	\$429.95
----------	------------	--------------	------------------------	----------

GEN-Y Hitch Adjustable Ball Mounts



GEN-Y Phantom-X Ball Mounts



- Fits 2" receiver
- Uses 5/8" pin and clip (not included)
- Ball plate has 1" ball hole
- Light weight, tough, durable
- 100% Satisfaction Guaranteed!
- Limited Lifetime Warranty

HMSG053X	7,000 GTW	700 TW	4.5" drop	\$139.99
HMSG054X	7,000 GTW	700 TW	7" drop	\$149.99

GEN-Y Glyder Torsion Ball Mounts



- Fits 2" receiver
- 1" ball hole
- Precision milled & drilled
- Heavy duty rubber torsion-flex cords
- 100% Satisfaction Guaranteed!
- 5-year torsion warranty; Lifetime workmanship warranty!

HMSG12001	7,000 GTW	400-700 TW	2" drop	\$219.95
HMSG12005	7,000 GTW	400-700 TW	6" drop	\$259.95

GEN-Y Bolt-On Adjustable Hitch



- Bolt or weld to your truck
- Super heavy duty construction
- 2" and 2 5/16" balls, and pintle all in 1 unit
- 2 pins included
- 100% Satisfaction Guaranteed!

HMSG124	16,000 GTW	2,000 TW	7 1/2" drop	\$379.95
HMSG032	2" replacement pintle lock, includes 5/8" pin & clip			\$49.95
HMSG099	5/8" replacement pin, 4 1/8" usable length			\$15.95

GEN-Y Ball Mount Accessory



- Compatible with articulating couplers and wagon clevises

HMSGMAT	10,000 GTW	1.25" diameter hole	2" shank	\$144.95
---------	------------	---------------------	----------	----------

GEN-Y Accessories



HMSG099



HMSG032



HMSG051



HMSG090

- 5/8" and 3/4" receiver pin holes. Please order correct size pin
- HMSG032/062: Includes 5/8" pin & clip
- HMSG0162: Includes 3/4" pin & clip

HMSG090	1 1/8" add-on ball for GEN-Y ball mounts	\$24.95
HMSG032	2" Replacement Pintle Lock	\$49.95
HMSG062	2 1/2" Replacement Pintle Lock, 5/8" pin hole	\$64.95
HMSG0162	2 1/2" Replacement Pintle Lock, 3/4" pin hole, 32K	\$79.95
HMSG096	5/8" replacement pin & clip, 3 1/16" usable length	\$15.95
HMSG099	5/8" replacement pin & clip, 4 1/8" usable length	\$15.95
HMSG097	3/4" replacement pin & clip, 4 1/8" usable length	\$17.95
HMSG011A	Replacement twist pin clip	\$0.99
HMSG051	Replacement dual ball mount, 2" shank, 16K	\$119.95
HMSG061	Replacement dual ball mount, 2 1/2" shank, 21K	\$144.95
HMSG0161	Replacement dual ball mount, 2 1/2" shank, 32K	\$156.95

Infinite Rule Lock Kits



HRL1666

- Keyed alike, see page 9 for more details

HRL1666	(2) hitch head locks & (1) 5/8" receiver lock, 10-16K GEN-Y	\$122.95
HRL1651	(2) hitch head locks & (1) 5/8" receiver lock for 21K GEN-Y	\$124.95
HRL1655	(2) hitch head locks & (1) 5/8" receiver lock for 32K GEN-Y	\$134.95

Receiver Pins



HARP



HARPL



HALP316



HAHP1

- Secures ball mount in receiver hitch
- $\frac{5}{8}$ " pins are used on class 3, 4, & 5 receiver hitches
- $\frac{1}{2}$ " pins are used on class 1 & 2 receiver hitches
- HALP316 lynch does not fit HARP12

	$\frac{5}{8}$ " pin & clip, 3" usable length for 2" receivers	\$3.99
HARP	Buy 6 or more, each	\$3.82
	Buy 12 or more, each	\$3.66
HARPL	$\frac{5}{8}$ " pin & lynch, 5" usable length for up to 3" rec.	\$4.99
HARP12	$\frac{1}{2}$ " pin & clip	\$2.99
HALP316	$\frac{3}{16}$ " replacement lynch for HARP or HARPL	\$0.99
HAHP1	Replacement clip for HARP	\$1.79
HAHP	Replacement clip for HARP12	\$0.79

Pivot Latch Receiver Pin



- Just pull out on the barrel head and rotate to latch in place
- Spring loaded barrel head locks on either side of the pin
- Fits 2" & 2.5" receivers

ITEM#	Description	Price
HARP4	Chrome $\frac{5}{8}$ " pivot pin	\$9.99
HARP42	Stainless Steel $\frac{5}{8}$ " pivot pin	\$19.95

Lynch Pins



HALP316	$\frac{3}{16}$ " lynch pin	\$0.99
HALP416	$\frac{1}{4}$ " lynch pin	\$1.29
HALP516	$\frac{5}{16}$ " lynch pin	\$1.19
HALP716	$\frac{7}{16}$ " lynch pin	\$1.99

Premium Locking Receiver Pins

INFINITERULE[®]
SECURITY



- Stainless Steel!
- Tight fitting weatherproof rubber cap and O-ring to protect keyhole from water, grime, dirt, and debris

ITEM#	Size	Fits	Capacity	Price
HRL1072	$\frac{5}{8}$ " x $3\frac{3}{8}$ " span	2"-2 $\frac{1}{2}$ " receivers	21K	\$40.95
HRL1073	$\frac{5}{8}$ " x $3\frac{3}{8}$ " span	3" receivers	21K	\$41.95

Locking Receiver Pins



HARPBB12



HARPLBB/BB25



HARPL24

- Gives you peace of mind while parked or towing
- Includes key-hole cover

ITEM#	Size	Style	Fits	Price
HARPBB12	$\frac{1}{2}$ " for class 1-2	barbell	1 $\frac{1}{4}$ " receivers	\$30.95
HARPLM	$\frac{1}{2}$ " for class 1-2	bent pin	1 $\frac{1}{4}$ " receivers	\$14.95
HARPLBB	$\frac{5}{8}$ " for class 3-5	barbell	2" receivers	\$22.95
HARPBB25	$\frac{5}{8}$ " for class 3-5	barbell	2"-2 $\frac{1}{2}$ " receivers	\$21.95
HARPLD	$\frac{5}{8}$ " for class 3-5	bent pin	2"-2 $\frac{1}{2}$ " receivers	\$15.95
HARPL24	$\frac{5}{8}$ " for class 3-5	right angle	2"-2 $\frac{1}{2}$ " receivers	\$32.95
HARPBB30	$\frac{5}{8}$ " or $\frac{3}{4}$ " cls 3-5	barbell	2 $\frac{1}{2}$ " -3" receivers	\$26.95

Stainless Steel Locking Pins



HALS300



HALS202



HALS230

- Solid stainless steel
- HALS300: Limited lifetime warranty

ITEM#	Size	Style	Fits	Price
HALS300	$\frac{5}{8}$ " for class 3-5	barbell	2" receivers	\$25.95
HALS202	$\frac{5}{8}$ " for class 3-5	barbell	2" & 2 $\frac{1}{2}$ " receivers	\$42.95
HALS230	$\frac{5}{8}$ " for class 3-5	barbell	2", 2 $\frac{1}{2}$ ", & 3" receivers	\$58.95

Keyed-alike lock set See page 29

