



Folding Ball Gooseneck

Folding Ball Gooseneck



- 30,000 GTW / 7,500 lb TW
- Durable carbide powder coat finish
- Easy to follow installation instructions
- Easy access to grease fittings
- Stainless steel pivot spring and safety pin
- Cutting templates (paper template included)
- U-bolt safety chain hook-ups
- No tools needed to fold

HGFD	Folding ball gooseneck hitch	\$269.95
HGFDU	Replacement safety chain U-bolts	\$36.95

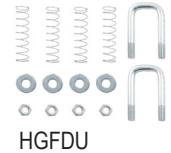
Folding Ball Install Kits



- 30,000 GTW
- Rust-resistant liquid Bonderite® coating
- Vehicle-specific design optimizes strength and install time
- All 2WD trucks need clearance check when truck is loaded & unloaded to verify inverted ball won't hit differential.

Application Chart (NO Cab & Chassis trucks)	ITEM#	Price	Frame Drill
Chevrolet/GMC Full Size Pickups			
99-07 1500/2500 Light Duty , 07 Classic only	HGF341	\$405.95	No
01-10 2500/3500 Heavy Duty	HGF341	\$405.95	No
11-19 2500/3500 Heavy Duty (Without 5 factory holes in truck bed)	HGF301	\$288.00	No
Ford Full Size Pickups			
99-16 F250/350 Super Duty, 08-11 F450 w/ factory bed (Without 5 factory holes in truck bed)	HGF332	\$304.95	No

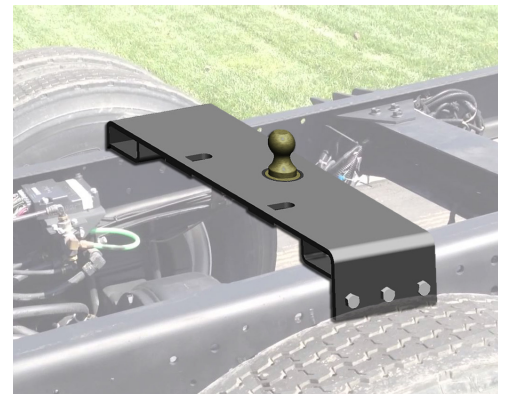
Fixed Ball Gooseneck Plate



- 30,000 GTW
- Mounting hardware included
- Safety chain U-bolts sold separately
- Fits CURT folding ball install kits

HGFP	Fixed ball gooseneck hitch	\$179.95
HGFDU	Safety chain U-bolt kit	\$36.95

Cab & Chassis Flip Over Gooseneck Hitch



- Includes standard 2 5/16" gooseneck ball
- Designed to fit 34" wide cab & chassis frames
- 2" of lift above truck frame for exhaust clearance
- Rotate spring-loaded handle pin to release ball
- Ball stows inverted out of the way in the socket
- Rated for 30,000 GTW and 7,500 TW

HGP203	Cab & Chassis Flip-Over Gooseneck	\$655.00
--------	-----------------------------------	----------

Weldable Gooseneck Plates

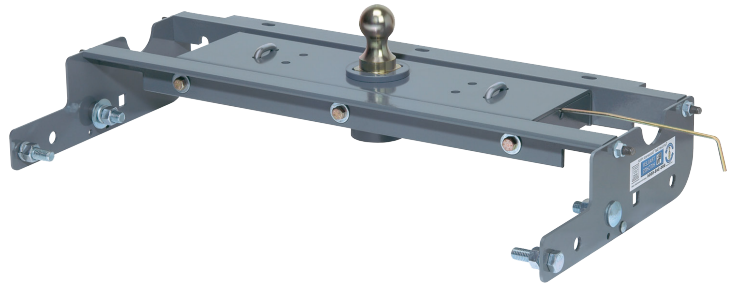


- Underbed reinforcement required to reach maximum GTW rating.
- | | | | |
|--------|--|---------|----------|
| HGP005 | Gooseneck plate w/ d-rings, 16"x16"x3/8" | 30K GTW | \$169.95 |
| HGP000 | Gooseneck plate w/ d-rings, 13"x48"x3/8" | 30K GTW | \$335.95 |

B&W Turnover Ball



- 30,000 GTW/ 7,500 TW
- 2⁵/₁₆" ball stores in-bed (unless noted)
- No bed removal required to install
- Limited Lifetime Warranty



Application Chart (NO Cab & Chassis trucks)	Complete Kit	Price	Footnotes
Chevrolet/GMC Full Size Pickup,			
88-98 1500 Long Bed	HGT1000	\$599.00	c
99-07 1500/2500 LD ('99-'01 NBS) (tube frame changing to C-channel before axle)	HGT1059	\$599.00	c,g
07-18 1500 Long Bed, '07 Boxed Frame	HGT1007	\$599.00	c,g
07-19 1500 Short Bed, '07 Boxed Frame, ('19 Chevy LD & GMC Limited only)	HGT1057	\$599.00	c,g
19-26 1500 (Except '19 Chevy LD & GMC Limited) (Except Carbon Pro Bed)	HGT1019	\$599.00	c
88-00 2500HD/3500HD Long Bed, Full C-Channel Frame	HGT1000	\$599.00	c
01-10 2500 HD	HGT1067	\$599.00	c,g,q
01-07 3500 HD ('07- 2 bed cross members over axle)	HGT1062	\$599.00	c
07-10 3500 HD, New Body Style ('07- One bed cross member over axle)	HGT1067	\$599.00	c,g,q
11-15 2500/3500	HGT1012	\$599.00	c
16-19 2500/3500 (Without 5 factory holes in truck bed)	HGT1016	\$599.00	c,g
20-25 2500/3500 (Without 5 factory holes in truck bed) (except Carbon Pro Bed)	HGT1020	\$699.00	c
Dodge Full Size Pickup,			
94-02 1500/2500/3500 No '02 1500	HGT1394	\$599.00	c
02-08 1500 No Mega Cab	HGT1316	\$599.00	c,g
09-18 1500 ('19-24 1500 Classic only)	HGT1309	\$599.00	a,c,h
19-25 1500, (Except Classic)(Except TRX)	HGT1325	\$599.00	c
06-12 1500/2500/3500 Mega-Cab & '10-'12 2500/3500 Gas	HGT1308	\$599.00	c,g
03-12 2500/3500 No Mega-Cab, No '10-'12 2500/3500 Gas	HGT1313	\$599.00	c,g
2013 2500 No Mega-Cab, No Gas	HGT1313	\$599.00	c,g
2013 2500 Mega-Cab, Also fits Gas	HGT1308	\$599.00	c,g
13-18 3500 (Without 5 factory holes in truck bed)	HGT1314	\$599.00	c
14-18 2500 (Without 5 factory holes in truck bed)	HGT1384	\$599.00	c
19-25 2500/3500 (Without 5 factory holes in truck bed)	HGT1320	\$599.00	c
Ford Full Size Pickup			
80-98 250/350, Without overload springs (Except 250 LD)	HGT1100	\$599.00	c
80-98 250/350, With overload springs	HGT1110	\$599.00	r
04-14 150 (Except '04 old body style)	HGT1104	\$599.00	c
15-25 150 (Except Tremor & Raptor & Lightning & '19-'20 Limited & 21-23 Limited w/ dual exhaust)	HGT1121	\$599.00	c
99-10 250/350 SD	HGT1108	\$599.00	c
08-10 F450 SD with factory installed bed	HGT1108	\$599.00	c,w
11-16 F250/350/450 SD with factory installed bed (Without 5 factory holes in truck bed)	HGT1111	\$599.00	c
17-22 F250/350/450 SD with factory installed bed (Without 5 factory holes in truck bed)	HGT1116	\$699.00	c
23-26 F250/350/450 SD with factory installed bed (Without 5 factory holes in truck bed)	HGT1123	\$699.00	c,w
Toyota Tundra			
07-21 (ball cannot be turned over and stowed in hitch, also see footnote a)	HGT1257	\$599.00	a,c,q
22-25 (may need to remove rubber runners from Companions to get latch pin to engage in post)	HGT1222	\$599.00	c,w



Footnotes:

Most applications: cut or remove heat shield

a. HGT1257 and HGT1309 will not accept standard B&W ball, accessories, or 5th wheels. Please call for options.

c. No frame drilling required

g. Notch out lip where fender & bed floor join

h. In-bed ball latch

q. Lower exhaust on some trucks (brackets included)

t. May need to drill one 7/16" hole/ side

r. Loosen bed bolts and drill one 1/2" hole/side

w. Relocate brake and fuel lines, permanently lower exhaust, bracket provided

z. Loosen and/or remove bed bolts and drill two 9/16" holes per side

Companion 5th Wheel



*OEM compatible
Companions
are listed on
pages 155-157.*

- Fits into B&W Turnoverball® hitches
- 20,000 GTW / 5,000 VTW
- 3 height adjustments from 16¼" to 18¼"
- Horizontal adjustment from 1" ahead to 7" behind ball socket
- Fully articulating head allows front/back and side/side pivoting
- Not compatible with REESE Side winder pin box
- Will NOT work with HGT1257 and HGT1309 B&W Turnoverball®

HGT3500 Companion 5th wheel **\$1099.00**

Companion Slider 5th Wheel



- Fits into B&W Turnoverball® hitches
- 20,000 GTW / 4,500 VTW
- 3 height adjustments from 17" to 19"
- 2 horizontal adjustments from 1" to 3" rearward of ball socket
- Fully articulating head allows front/back and side/side pivoting
- Not compatible with REESE Side winder pin box
- Will NOT work with HGT1257 and HGT1309 B&W Turnoverball®

HGT3405 Companion 5th wheel Slider **\$1,599.00**

B&W Turnoverball® Universal Mount



- 6" by 8" plate
- ½" lip for truck bed

HGT1500 Universal Turnoverball® **\$249.00**

Flat Bed Companion 5th Wheel



- Fits into B&W Turnoverball® hitches
- 25,000 GTW / 6,250 VTW
- Fixed height of 10½"
- Footprint 17¼" wide by 18" deep
- Fully articulating head allows front/back and side/side pivoting
- Not compatible with REESE Side winder pin box
- Will NOT work with HGT1257 and HGT1309 B&W Turnoverball®

HGT3050 Companion 5th wheel for flatbed **\$999.00**

Replacement Parts & Accessories



HGT1710 Ball hole cover for stowed Turnoverball® **\$16.95**
HGT1715 Ball hole cover for empty Turnoverball® socket **\$16.95**
HGT9990 Replacement safety chain attachment kit **\$37.95**

• Items below will NOT work with HGT1257 and HGT1309 B&W Turnoverball® hitches. Call for options for those hitches.

HGT2000 Replacement Turnoverball®, 30K **\$111.96**
HGT4085 4" Offset Ball, 20K **\$190.95**
HGT2050 1" Hi-Rise Ball, 20K **\$161.95**
HGT2025 3" Turnover Ball, 40K **\$189.95**
HG30033 WeighSafe Ball with tongue weight scale **\$274.00**
HG30054 CURT cushioned gooseneck ball, 30K **\$299.95**
HGT4000 King Pin, 30K **\$190.95**

X5 Adapter



- Converts from B&W Turnover Ball hitch to standard bed rails
- Not compatible with turret-style pin boxes, such as Sidewinder or Turning Point
- Will not fit B&W HGT1257 & HGT1309
- Will not fit trucks with aluminum beds
- Factory or aftermarket bedliners may interfere with installation
- For 5th wheel hitch up to 20,000 lbs. GTW, 4,000 PW

HG16310 X-5 Adapter for up to 20K 5th Wheel **\$749.95**

5th Wheel Quick Install Brackets



- Brackets custom fitted to your truck frame.
- Reduces install time up to 50%
- Does not include bed rails or 5th wheel hitch
- Frame and bed rail mounting hardware included
- Fits most standard 5th wheel rails
- No Cab & Chassis trucks
- Available for Nissan Titan & Toyota Tundra, please call
- Beds must be at least 6' long

Application Chart (no Cab & Chassis trucks)		ITEM#	Price	Frame Drill
Chevy/GMC Full Size Pickup				
99-07	1500 (07 Classic only)	HG16418	\$239.95	
07-19	1500 (19 Legacy only)	HG16400	\$275.95	no
19-25	1500 (Without 5 factory holes in truck bed)	HG16469	\$318.95	no
01-10	2500/3500 (99-04 2500LD)	HG16418	\$239.95	
11-19	2500/3500 (Without 5 factory holes in truck bed)	HG16411	\$178.95	no
20-25	2500/3500 (Without 5 factory holes in truck bed)	HG16429	\$251.95	no
Dodge/RAM Full Size Pickup				
06-08	1500 Mega Cab only	HG16420	\$239.95	no
09-10	1500	HG16306	\$151.95	
11-18	1500 (Excluding Limited) Coil springs only	HG16306	\$151.95	
13-17	1500 With factory air suspension	HG16444	\$297.95	no
19-24	1500 Classic, Coil springs only	HG16306	\$151.95	
19-25	1500 (Excluding multifunction tailgate & TRX)	HG16307	\$269.95	no
03-12	2500/3500 Inc Mega Cab	HG16420	\$239.95	no
2013	2500 (Without 5 factory holes in truck bed)	HG16430	\$214.95	
14-25	2500 (Without 5 factory holes in truck bed)	HG16427	\$221.95	no
13-25	3500 (Without 5 factory holes in truck bed)	HG16430	\$214.95	
Ford Full Size Pickup				
04-14	F150 (04 New Body Style only)	HG16441	\$173.95	no
15-25	F150 (Excluding Police Responder & Lightning)	HG16911	\$299.95	no
99-04	F250/350 Super Duty,	HG16443	\$203.95	
05-10	F250/350 & 08-10 F450 (no Cab & Chassis)	HG16448	\$181.95	
11-16	F250/350 (11-15 F450 no Cab & Chassis) (Without 5 factory holes in truck bed)	HG16424	\$201.95	no
17-22	F250/350/450 (no Cab & Chassis) (Without 5 factory holes in truck bed)	HG16431	\$283.95	no
23-25	F250/350 SD (Without 5 factory holes in truck bed)	HG16432	\$293.95	no

CURT A-series 5th Wheels



- Fast, one pin head removal
- Includes 10" lube plate #HG5LP
- Fully-articulating torsion head for controlled coupling
- Interlocking cast jaws fully wrap the kingpin
- Cast yoke and poly torsion inserts suppress shock and noise
- Lock indicators visible from vehicle cab
- Rails sold separately: HG16200 or HG16204
- Use custom quick install brackets for enclosed boxed frames.
- Limited lifetime warranty
- Compatible with REESE Side winder pin box
- HG16052, HG16531, & HG16551 slide 12"

ITEM#	GTW	PW	3 Height Positions	Price
HG16120	16K	4,000	13 - 17"	\$736.95
HG16140	20K	5,000	13 - 17"	\$999.95
HG16180	25K	6,250	13 - 17"	\$1063.95
HG16052	16K	4,000	17½" - 21½" slider	\$1274.95
HG16531	20K	5,000	17½" - 21½" slider	\$1294.95
HG16551	25K	6,250	17½" - 21½" slider	\$1529.95

5th Wheel Rails



- Fits most 5th wheels hitches with standard foot print
 - Can be used with quick install bracket kits
 - HG16204/16200: 25K rated
- | | | |
|---------|--|----------|
| HG16204 | Bed Rails (Quick-install brackets sold sep.) | \$124.95 |
| HG16200 | Bed Rails & Universal L-bracket kit | \$179.95 |
| HG16101 | Replacement L-bracket kit with hardware | \$132.95 |
| HG5163 | 4 Replacement Pins & Clips for 5th Wheel | \$16.95 |



Gooseneck Plates & Recon 5th Wheel

Spyder Gooseneck Plate



- 20 1/2" wide
- Includes safety chain hookups
- 4 attaching pins & clips included
- Easy 4-pin installation & removal allows full access to bed
- Mounts to most 5th wheel rails including HG16200
- Durable black carbide finish resists rust & corrosion
- Use HG50223 if your state does not allow safety chains to be attached to the ball plate.
- Distributes weight closer to vehicle frame than HG16055

HG16085	Spyder Gooseneck, 25K GTW, 6,250 TW	\$319.95
HG16090	Spyder Gooseneck, 30K GTW, 7,500 TW	\$475.95
HG50223	Safety Chain Bracket Kit	\$119.95
HG5163	4 Replacement Attaching Pins & Clips	\$16.95

Gooseneck Plate



- 25,000 GTW
- Built-in Safety chain hookups
- 4 attaching pins & clips included
- Easy 4-pin installation & removal allows full access to bed
- Mounts to most 5th wheel rails including HG16200
- Durable black carbide finish resists rust & corrosion
- Can be positioned over the axle or flipped for 3" rearward offset
- Use HG50223 if your state does not allow safety chains to be attached to the ball plate.

HG16055	Gooseneck Bent Plate, 10" wide, 6,250 TW	\$219.95
HG50223	Safety Chain Bracket Kit	\$119.95
HG5163	4 Replacement Attaching Pins & Clips	\$16.95

Multi-Fit OEM Puck Sytem Gooseneck



- 4" rearward offset provides improved turning and clearance
- Integrated safety chain holders
- Multi-fit design fits select Chevrolet, Ford, GMC, Nissan, & RAM puck systems

HG30058	2 5/16" ball w/ 4" offset, 30K GTW, 7,500 TW	\$448.95
----------------	--	-----------------

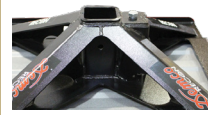
Gooseneck Mounted 5th Wheel



MADE
in USA!

Gooseneck
to 5th wheel
adapter!

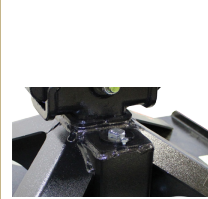
Easy install!



1. Set base on gooseneck



2. Insert pin & clip



3. Tighten torque bolt



4. Insert head; install pin

- Unique mounting design fits most 2 5/16" gooseneck balls
- Light weight, two-piece geometric design (only 135 lbs total)
- Wrap-around jaw design with lock bar for more secure towing
- Fully articulating head allowing front/back and side/side pivoting
- 3 height adjustments from 15 1/2" to 18"
- 21,000 GTW, 4,000 VTW
- Not compatible with REESE Side winder pin box
- HG50046:**
- Compatible with recessed goosenecks
- Top of G-Neck Ball must be no lower than 1 3/16" below deck surface
- Minimum recessed pocket 14" x 14" - Maximum 18" x 18"
- Must have minimum of 7-1/2" from the center of the goose ball to the rear (bumper) side of the recessed pocket
- Minimum recessed pocket depth 3.875"

HG50045	21K G-neck Ball Mounted 5 th Wheel	\$885.00
----------------	---	-----------------

HG50046	21K Recessed G-neck Ball Mounted 5 th Wheel	\$885.00
----------------	--	-----------------

Safe Load Gooseneck Plate



- Built-in tongue weight scale
- Fits industry standard rails
- 30,000 GTW, 7,500 TW
- 2 5/16" stainless steel ball
- Can be positioned over the axle or flipped for 3" rearward offset

HG30039	Safe Load Gooseneck Plate	\$354.00
----------------	---------------------------	-----------------

5th Wheel Hitches



Patriot 5th Wheels



- Side to side pivot with spring cushioning
- Fully articulating head allowing front-back and side-side pivoting
- Bed rails sold separately
- HGT3250- 16-19" height adjustments
- HGT3255- 1-piece base design for easier installation & more strength
- HGT3270- Not compatible with HG16027
- HGT3270- 12" of slide, 17"-19" height adjustment

HGT3250	16K Patriot	4,000 PW	\$699.00
HGT3255	18K Patriot	4,500 PW	\$799.00
HGT3270	18K Patriot Slider	4,500 PW	\$899.00
HGT3210	Bed Rails for Patriot 5th wheel		\$130.00

Companion 5th Wheel



- Side to side pivot with spring cushioning
 - Fully articulating head allowing front-back and side-side pivoting
- | | | |
|---------|-----------------------------------|----------|
| HGT3550 | 20K Companion, rail mounted | \$899.00 |
| HGT3210 | Bed Rails for Companion 5th wheel | \$130.00 |

5th Wheel Lube Plates



HG5LP	10" Lube Plate	\$14.95
HG5LPL	Reese Elite™ 12" Lube Plate	\$16.95

CURT PowerRide™ 5th Wheels



- Professional-grade 5th wheel towing power!
- Fast, one pin head removal
- Integrated wear plates for smooth operation and no grease
- Ergonomic, self-resetting handle for easier use from the side
- Multi-directional, cast yoke head for smooth ride
- Interlocking cast jaws fully wrap the kingpin
- Three-position coupling indicator clearly shows coupling status
- Use custom quick install brackets for enclosed boxed frames.
- Rails sold separately
- Limited lifetime warranty
- Compatible with REESE Side winder pin box
- HG16205:
- Industry-standard mounting point to accept most 5th wheel hitches
- Designed for use with custom 5th wheel brackets (sold separately)

ITEM#	GTW	PW	4 Height Positions	Price
HG16320	30K	7,500	13" to 17"	\$1348.95
HG16205	40K	Pair of bed rails		\$244.95

Advantage Combo Hitch



- Swap between king pin and gooseneck with a simple slide!
 - Easy adjustment & heavy-duty design
 - Pins onto industry standard bed rails
- | | | |
|---------|--------------------------------|-----------|
| HG21204 | Advantage 5thwheel G-neck, 25K | \$1499.95 |
|---------|--------------------------------|-----------|

5th Wheels



HG16039



HGT3305



HG16594

- Designed to fit Ford trucks with factory holes in the bed
- HG16039: 3 height adjustments from 13" to 17"
- HGT3300/3305: 3 height adjustments from 16 $\frac{3}{4}$ " to 18 $\frac{3}{4}$ "
- HG16594: 4 height adjustments from 13" to 17"

HG16039	25K CURT 5 th wheel	6,000 PW	\$1099.00
HGT3300	20K B&W Companion™ 5 th wheel	5,000 PW	\$1199.00
HGT3305	25K B&W Companion™ 5 th wheel	6,250 PW	\$1399.00
HG16594	30K Curt PowerRide 5 th wheel	7,500 PW	\$1597.95

Puck to Standard Rail Adapter



- Designed to fit Ford trucks with factory holes in the bed
- Provides industry-standard rails accepting most 5th wheel hitches
- Not compatible with B&W Patriot slider fifth wheels

HG16027	25K adapter to standard 5 th wheel rails, 6,250 PW	\$476.95
---------	---	----------

Short Bed 5th Wheels



HG16057



HGT3370

- Designed to fit Ford trucks with factory holes in the bed
- HG16057: 3 height adjustments from 19" to 23"
- HGT3370: 3 height adjustments from 16 $\frac{3}{4}$ " to 18 $\frac{3}{4}$ "

HG16057	25K CURT 5 th wheel roller, 6,250 PW	\$1999.95
HGT3370	20K B&W Companion™ 5 th wheel slider, 5,000 PW	\$1699.00

Ford Ball Kits



HG30010



HG30061



HG30031

- Designed to fit Ford trucks with factory holes in the bed
- HG30061: Handle keeps hands clean and serves as ball latch
- HG30031/HG30034: Built-in hydraulic tongue weight scale

HG30010	30K CURT ball kit	\$219.95
HG30016	38K CURT ball kit, 2-5/16" gooseneck ball	\$239.95
HG30061	30K B&W ball kit	\$299.00
HG30031	30K WeighSafe ball kit	\$334.00
HG30034	30K WeighSafe ball only	\$274.00
HG30011	Pair of CURT safety chain attachments	\$89.95
HG30019	38K CURT 3" gooseneck ball only	\$209.95

5th Wheels



HG16049



HGT3600

- Designed to fit Dodge trucks with factory holes in the bed
- HG16049: 3 height adjustments from 14" to 18"
- HGT3600: 3 height adjustments from 17" to 19"

HG16049	25K CURT 5 th wheel	6,250 PW	\$899.00
HGT3600	25K B&W Companion 5 th wheel	6,250 PW	\$1399.00

Short Bed 5th Wheels



HG16058



HGT3670

- Designed to fit Dodge trucks with factory holes in the bed
- HG16058: 3 height adjustments from 20" to 24"
- HGT3670: 3 height adjustments from 17" to 19"

HG16058	25K CURT 5 th wheel roller, 6,250 PW	\$2049.95
HGT3670	20K B&W Companion™ 5 th wheel slider, 5,000 PW	\$1699.00

RAM Ball Kits



HG30012



HG30062



HG30032

- Designed to fit Dodge trucks with factory holes in the bed
- HG30062: Handle keeps hands clean and serves as ball latch
- HG30032/HG30034: Built-in hydraulic tongue weight scale

HG30012	30K CURT ball kit	\$229.95
HG30018	38K CURT ball kit, 2-5/16" gooseneck ball	\$289.95
HG30062	30K B&W ball kit	\$299.00
HG30032	30K WeighSafe ball kit	\$334.00
HG30034	30K WeighSafe ball only	\$274.00
HG30013	Pair of CURT safety chain attachments	\$92.95
HG30019	38K CURT 3" gooseneck ball only	\$209.95

Puck to Standard Rail Adapter



- Designed to fit RAM trucks with factory holes in the bed

HG16042	25K adapter to standard 5 th wheel rails	\$522.95
---------	---	----------



Chevy & Nissan OEM-Compatible Options



5th Wheels



HGT3705



HG16070

- Designed to fit Chevy/GMC trucks with factory holes in the bed
- CURT models: 3 height adjustments from 13" to 17"
- B&W models: 3 height adjustments from 16¾" to 18¾"

16-19 Pickups

HG16066	25K CURT 5 th wheel	6,250 PW	\$1347.95
HGT3700	20K B&W Companion 5 th wheel	5,000 PW	\$1199.00
HGT3705	25K B&W Companion 5 th wheel	6,250 PW	\$1399.00

20-25 Pickups

HGT3710	20K B&W Companion 5 th wheel	5,000 PW	\$1199.00
HGT3715	25K B&W Companion 5 th wheel	6,250 PW	\$1399.00
HG16093	25K CURT 5 th wheel	6,250 PW	\$1367.95
HG16070	30K CURT 5 th wheel	7,500 PW	\$1719.95

Chevy/GMC & Nissan Ball Kits



HG30010



HG30061



HG30031

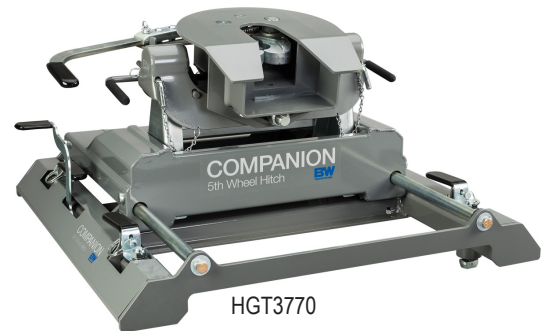
- Fits Chevy/GMC & Nissan trucks with factory holes in the bed
- HG30061: Handle keeps hands clean and serves as ball latch
- HG30031/HG30034: Built-in hydraulic tongue weight scale

HG30010	30K CURT ball kit	\$219.95
HG30016	38K CURT ball kit, 2-5/16" gooseneck ball	\$239.95
HG30061	30K B&W ball kit	\$299.00
HG30031	30K WeighSafe ball kit	\$334.00
HG30034	30K WeighSafe ball only	\$274.00
HG30011	Pair of CURT safety chain attachments	\$89.95
HG30019	38K CURT 3" gooseneck ball only	\$209.95

Short Bed 5th Wheels



HG16698



HGT3770

- Designed to fit Chevy/GMC trucks with factory holes in the bed
- HG16698/HG16057: 3 height adjustments from 19" to 23"
- B&W models: 3 height adjustments from 16¾" to 18¾"

16-19 Pickups

HG16698	20K CURT 5 th wheel roller	5,000 PW	\$1566.95
HGT3770	20K B&W Companion slider	5,000 PW	\$1699.00

20-25 Pickups

HG16057	25K CURT 5 th wheel roller	6,250 PW	\$1999.95
HGT3775	20K B&W Companion slider	5,000 PW	\$1699.00

Puck to Standard Bed Rail Adapters



- Designed to fit Chevy/ GMC truck with factory holes in bed
- Provides industry-standard rails accepting most 5th wheel hitches
- Not compatible with B&W Patriot slider fifth wheels

17-19 Pickups (with 5th wheel prep package)

HG16050	30K adapter	7,500 PW	\$504.95
---------	-------------	----------	----------

20-25 Pickups (with 5th wheel prep package)

HG16027	25K adapter	6,250 PW	\$476.95
---------	-------------	----------	----------

Round Gooseneck Couplers



TCG230

- 2 $\frac{5}{16}$ " ball, 30" retracted height + 8" adjustment
- Precision cast one piece coupler casting
- Curved internal ball clamp bar for better fit
- Protected hidden spring latch mechanism

TCG225 25K, 3 $\frac{1}{16}$ " O.D. inner tube, includes outer tube	\$134.95
TCG221 25K, Inner tube with coupler head for TCG225	\$123.95
TCG230 30K, 3 $\frac{1}{16}$ " O.D. inner tube, includes outer tube	\$156.95
TCG231 30K, Inner tube with coupler head for TCG230	\$141.95
TCG980 Replacement $\frac{3}{4}$ " load bearing pin	\$9.99

Self Latching Gooseneck Coupler



- 2 $\frac{5}{16}$ " ball, 28 $\frac{7}{8}$ " retracted height + 8" of adjustability
- Self latching coupler mechanism

TCG232 30K, 3 $\frac{1}{16}$ " O.D. inner tube, includes outer tube	\$161.95
---	----------

Square Gooseneck Couplers



TCG430



TCG433



HGN2

- 2 $\frac{5}{16}$ " ball, 32" retracted height
- Precision cast one piece coupler casting
- Curved internal ball clamp bar for better fit
- Protected hidden spring latch mechanism
- TCG430: 8" adjustment
- TCG433: 7" adjustment, load leveling gooseneck coupler
- TCG440: 3" ball, 29" retracted height

TCG430 30K 4" O.D. inner tube, 4.5" O.D. outer tube, RAM brand	\$188.95
TCG431 30K Inner tube with coupler head for TCG430	\$173.95
TCG433 30K 4" O.D. inner tube, 4.5" O.D. outer tube, RAM brand	\$199.95
TCG440 40K 4" O.D. inner tube, 4.5" O.D. outer tube, RAM brand	\$225.95
TCG980 Replacement $\frac{3}{4}$ " load bearing pin (RAM brand)	\$9.99
HGN2 28K 4 $\frac{1}{2}$ " square lockable auto-latch, Popup brand	\$303.00

Enclosed Trailer Ramp Springs

See page 35





Bulldog Gooseneck Coupler



- 2 $\frac{5}{16}$ " ball, 30" height + 8" adjustment
- TCG226 30K, 4" O.D. inner tube, includes outer tube \$317.95
- TCG980 Replacement $\frac{3}{4}$ " load bearing pin (RAM brand) \$9.99

Bulldog BX1 Gooseneck Couplers



TCG238



TCG239



TCG435

- 2 $\frac{5}{16}$ " ball, 30" height + 8" adjustment
- TCG435: Cone-shaped latch plate guides trailer onto ball
- Allows for shorter retracted height for trucks with high bed height
- Continuous tight fit – ever-increasing cam tightening mechanism
- Integrated feature allows for padlocking the coupler to ball
- TCG238 30K, 4" O.D inner tube, includes outer tube, BX1 \$294.95
- TCG239 30K, Inner tube with coupler head for TCG238, BX1 \$201.95
- TCG435 25K, 4" O.D. square inner tube with coupler head, BX1 \$301.95
- TCG980 Replacement $\frac{3}{4}$ " load bearing pin (RAM brand) \$9.99

Quick Couplers



TCG273



TCG473



- 2 $\frac{5}{16}$ " ball, 26 $\frac{5}{8}$ " overall height
- 5 $\frac{1}{2}$ " cone shaped capture area self aligns coupler onto the ball
- Precision CNC machining from 4140 heat treated steel
- Automatic latching coupler, pull cable to release
- Grease fitting to lubricate ball & coupler
- Lock pocket to secure trailer when unhitched
- Lifetime warranty
- Made in the USA!

ITEM#	Description	GTW/TW	Price
TCG270	Quick Coupler, 3-7/8" round	30K, 8K	\$499.00
TCG272	Quick Coupler, 4" round	30K, 8K	\$499.00
TCG273	Quick Coupler, 4" round HD	30K, 12K	\$549.00
TCG473	Quick Coupler, 4" square	30K, 12K	\$499.00

Vision Breakaway Kits

See page 134



EZ-Latch Gooseneck Couplers

DEMCO

New!

INFINITE RULE SECURITY

BW TRAILER HITCHES

PopUP



TCG451



TCG251



HRL1130



HAPS24

- EZ-Latch coupler design
 - Fully retracted length, 29.25", fully extended length, 37.5"
 - 4 adjustment holes with 2.75" between each hole
- | | | |
|---------|--|----------|
| TCG451 | 4" square inner tube, 30K, 2 ⁵ / ₁₆ " coupler, painted | \$170.95 |
| TCG453 | 4" square outer tube, raw, includes 1 pin & 2 set bolts | \$113.95 |
| TCG251 | 4" round inner tube, 30K, 2 ⁵ / ₁₆ " coupler, painted | \$169.95 |
| TCG253 | 4" round outer tube, raw, includes 1 pin & 2 set bolts | \$113.95 |
| HRL1130 | Latch lock for Demco EZ-Latch cast gooseneck coupler | \$58.45 |
| HAPS24 | Safety pin for Demco EZ-Latch, 5/16" x 4" | \$1.59 |

GEN-Y VIKING Gooseneck Couplers

GEN-Y HITCH



TCG7102



TCG7101



HRL1157

- SnapLatch design with pull cable
 - Durable black powder coat finish
- | | | |
|---------|---|----------|
| TCG7101 | 4" square tube, 30K, 8,500 TW, 2 ⁵ / ₁₆ " coupler | \$349.95 |
| TCG7102 | 4" round tube, 30K, 8,500 TW, 2 ⁵ / ₁₆ " coupler | \$374.95 |
| HRL1157 | Infinite Rule latch lock for Viking w/ Snaplatch | \$51.95 |

Offset Couplers



HGSB042



HGSB104



HGSB116

- Adds clearance between truck and trailer for short bed trucks
- Rated to 24,000 GTW and 6,000 TW
- Lockable with your padlock
- HGSB042: B&W brand, self-aligning, cone-shaped coupler
- PopUp brand: Self-latching coupler, includes release cable and hardware

HGSB042	10" offset	4" round tube	\$399.00
HGSB104	9" offset	4" round tube 4" longer lower tube	\$478.00
HGSB200	9" offset	4 1/2" square tube	\$452.00
HGSB300	9" offset	4" square tube	\$452.00
HGSB116	16" offset	4" round tube	\$559.00
HGSB216	16" offset	4 1/2" square tube	\$597.00
HGSB316	16" offset	4" square tube	\$559.00

GEN-Y SPARTAN Torsion Coupler

GEN-Y HITCH



HRL1157

TCG7062S



- 2.5" offset
- SnapLatch design with pull cable
- Best cushion gooseneck ride available
- Uses rubber torsion technology similar to torsion trailer axles
- 100% Satisfaction Guaranteed!
- 5-year torsion warranty; Lifetime workmanship warranty!

ITEM#	Description	GTW/TW	Optimum Ride TW	Price
TCG7002S	4" Round tube	25K, 3.5K	1,501-3,000 lb.	\$1031.99
TCG7042S	4" Round tube	25K, 4.5K	2,001-4,000 lb.	\$1049.95
TCG7062S	4" Round tube	25K, 5.5K	4,001-5,000 lb.	\$1146.99
TCG7082S	4" Round tube	25K, 6.5K	5,001-6,000 lb.	\$1199.95
TCG7092S	4" square tube	30K, 6.5K	4,500-6,500 lb.	\$1199.95
HRL1157	Infinite Rule latch lock for Spartan w/ Snaplatch			\$51.95



Kingpin



- Standard 2" SAE kingpin. Bolster plate is $\frac{3}{8}$ " thick. Must be preheated and welded by experienced professional welder.

HGK	Kingpin	\$85.95
HALKP60	Heavy Duty King Pin lock	\$59.95

King Pin to Gooseneck Adapter



HGKA



HGKA2

- 30,000 GTW
- 5th wheel must be locked into position to use
- Standard 2" king pin on bottom side with 2- $\frac{5}{16}$ " ball on the top side
- HGKA: One-piece forged design: 8" diameter bolster plate
- HGKA2: Zinc plated, welded design, 10" diameter bolster plate
- See electrical section for 7-pin adapters

HGKA	King pin to gooseneck adapter, forged design	\$133.95
HGKA2	King pin to gooseneck adapter, zinc plated	\$173.95

Kingpin Adapters



HGN5



HGN530



HGN6

- Use the kingpin adapter in place of your gooseneck coupler
- Clearance measured from center of the bottom pin hole down to the top of plate

ITEM#	Tube Dia.	GTW	Clearance	Hole dia	Finish	Price
HGN5	4" round	30K	2 $\frac{1}{4}$ "	$\frac{7}{8}$ "	black	\$267.00
HGN530	3 $\frac{1}{2}$ $\frac{1}{16}$ " round	30K	5 $\frac{1}{2}$ "	$\frac{3}{4}$ "	unpainted	\$149.95
HGN7	4" square	30K	2"	1"	black	\$267.00
HGN730	4" square	30K	7 $\frac{3}{4}$ "	$\frac{3}{4}$ "	unpainted	\$172.95
HGN740	4" square	40K	5 $\frac{1}{2}$ $\frac{1}{16}$ "	$\frac{3}{4}$ "	unpainted	\$209.95
HGN6	4 $\frac{1}{2}$ " square	30K	2 $\frac{1}{4}$ "	1 $\frac{1}{8}$ "	black	\$272.00
TCG980	$\frac{3}{4}$ " load bearing pin for RAM kingpin adapters					\$9.99

*Kingpin adapters are available in offset models.
Call for more information.*

Cushioned Gooseneck Couplers



TCG266

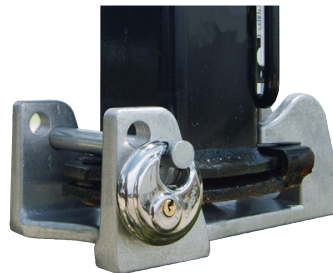


TCG267

- 4" round pipe
- TCG266-Cushions up, down, and 360°. Takes the shake, rattle, and roll out of gooseneck towing. Has ball guides for easy hookup
- TCG267-Single cushion for more stability, 2 year warranty on cushion, self-latching coupler, provided cable allows you to unlatch without entering your truck bed. Drilled tube to allow use of thru-pin.

TCG266	Rubberneck™ Coupler, 30,000 GTW	\$325.95
TCG267	Cushion Coupler, 30,000 GTW	\$773.00

Gooseneck Coupler Locks



HALEZ50



HALEZ51



HALEZ55



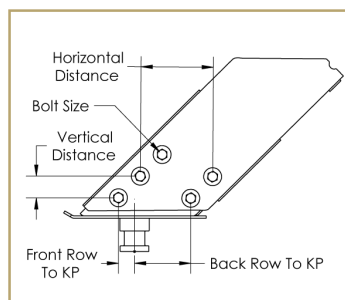
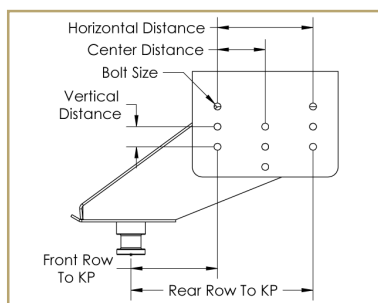
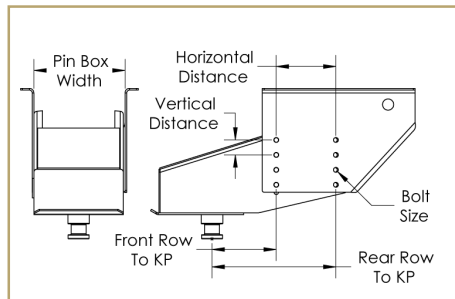
HALEZ45

- HALEZ50: Not compatible with cushioned, GEN-Y, offset, or auto-latching couplers. Secure with our padlock HALEZ45.
- HALEZ51- Secure the height adjustment set screw on all round and square tube gooseneck couplers. Secure with our padlock HALEZ45

HALEZ50	Gooseneck coupler lock	\$66.95
HALEZ51	Gooseneck coupler adjustment lock	\$45.95
HALEZ53	HALEZ50 & HALEZ51 with two padlocks	\$124.95
HALEZ45	Stainless Steel Disc Padlock, not keyed alike	\$17.95
HALEZ47	Stainless Steel Disc Padlock, Keyed Alike!	\$17.95
HALEZ55	Gooseneck coupler lock for RAM couplers	\$66.95
HALEZ57	HALEZ55 & HALEZ51 with two padlocks	\$124.95

Determining the pin box model on your camper

1. Look on the pin box to locate the manufacturer's name & part #
2. Or call the RV manufacturer with the last 6 digits of the serial #
3. Or take measurements as illustrated and call us



Goose Coupler Adapter



- Say "NO" to bolt-on or clamp-on 5th wheel adapters
- Replaces existing king pin box on your RV
- Allows for 4" height adjustment at coupler
- Always check trailer weight capacity before installing Goosebox
- Rated at 24,000 lb/ 6,500 TW
- Limited Lifetime Warranty
- HG94602 fits Lippert #1621 & 0719 wing sets
- HG94601 fits Lippert #1716, 1116 & 0115

HG94602	Goosebox Adapter	\$824.00
HG94601	Goosebox Adapter (Allow 1-2 wks for delivery)	\$824.00
HG94609	Accessory safety chain kit (Allow 1-2 wks for delivery)	\$163.00

Cushioned 5th Wheel Adapters



HCGA1216



HCGOA1216

- Fits all standard kingpins.
- Includes safety chains
- Attaches to kingpin on trailer and adapts to gooseneck ball on truck
- Polypropylene cushions cover bumps and jars for a smoother ride
- Height is measured from top of ball to base of king pin.
- Adapter must be bolted to king pin box (Optional for HCGA1216)
- King pin box must be strong enough to handle extra leverage.
- May void trailer warranty.

HCGA1216	12-16" adjustable height 20,000 GTW/4,000 TW	\$659.95
HCGOA1216	7½" offset, 12-16" adjustable height 20,000 GTW/2,000 TW	\$862.95

Goose Box Adapter



- Endorsed by Lippert Components, Inc. for their frame systems
- Air bag, dual shocks and rubber bumpers provide multi-directional shock absorption for a smoother driving experience
- Fits Lippert 1621, 1716, 0719, and Fabex PB 600 Series, and those with the Lippert Rhino bolt-hole pattern
- Air pressure relief valve prevents overfilling of air bags
- Always check trailer weight capacity before installing Goose Box
- Limited Lifetime warranty

HG94716	16K Goosebox, 3,200 pin weight,excludes Rhino	\$1651.95
HG94920	20K Goosebox, 4,000 pin weight	\$1813.95
HG94629	16K safety chain kit	\$79.95
HG94628	20K safety chain kit	\$99.95
HG94619	*Goosebox spacer needed for Lippert 1716,1116,0115	\$69.95