

## Trailer Door Bullet Latch Lock



Installed

- Fits most cargo door hasps
- Made from high strength 6061 aircraft grade aluminum
- Hardened ultra secure  $\frac{3}{8}$ " internal shackle; "It Can't Be Cut!"
- Securely covers the entire hasp and rivets
- Full Lifetime Guarantee

**HALD825** Trimax Bullet Door Lock **\$53.95**

## Trailer Door Lock



Back View

- Fits most cargo trailer door hasps
- Securely covers the entire hasp and rivets
- Foam gasket prevents rattling and scratching
- Heavy Duty aircraft aluminum. Will not rust!
- Available key-alike upon request

**HALD80** Trailer Door Lock **\$55.95**

## Security "Puck" Locks



HAL142  
Installed



HAL143

- Includes two keys
- Designed to cover & lock a trailer door latch
- Heavy-duty, chrome-plated steel lock

**HAL142** Security Lock **\$28.95**

**HAL143** Security Lock, 2 pack, Keyed alike **\$69.95**

## Trimmer Rack



- Easy snap-in holders with stainless steel springs
- Nylon coated hooks
- Holds three trimmers
- Hardware included, secures with padlock (not included)

**MT530** Lockable Trimmer Rack **\$232.95**

## Trailer Ladder Rack



- Rugged Cyclone Series
- Aluminum: lightweight, but strong
- Fits trailer widths from 60"-101"
- Adjustable height for high-roof trailers
- Hardware included

**MRR22** Universal Trailer Ladder Rack, pair **\$269.95**

## EZ Gate™ Tailgate Assist



- Simple installation
- Reduces lifting by 90%
- Reduces injuries & fatigue
- One kit works on gates up to 180 lb
- Side rail height of 10" or more necessary

**MT520** EZ Gate™ Tailgate Assist **\$190.95**

# Tarp Kits & Straps



## Trailer Tarp Kits



- Complete black mesh tarp kits
- Built for simple dump body and trailer tarp applications
- Heavy duty double-stitched and reinforced hems
- Brass grommets
- Each tarp has a sewn-in rear pocket to fit an optional anti-sail retention bow (sold separately)
- All mounting hardware included

ITEM#	Description	Width	Length	Price
THT5014	Complete Tarp Kit	5'	14'	\$199.95
THT6014	Complete Tarp Kit	6'	14'	\$215.95
THT6016	Complete Tarp Kit	6'	16'	\$226.95
THT6518	Complete Tarp Kit	6.5'	18'	\$238.95
THT7015	Complete Tarp Kit	7'	15'	\$230.95
THT7018	Complete Tarp Kit	7'	18'	\$241.95
THT7020	Complete Tarp Kit	7'	20'	\$244.95
THT8018	Complete Tarp Kit	8'	18'	\$305.00

## Replacement Tarps



THT9094	3009094	Black mesh replacement tarp, 6½' x 18'	\$148.95
THT9456	3009456	Black mesh replacement tarp, 7' x 18'	\$131.95
THT9458	3009458	Black mesh replacement tarp, 7½' x 18'	\$141.95
THT2116	3022116	Black mesh replacement tarp, 7' x 22'	\$153.95
THT2117	3022117	Black mesh replacement tarp, 8' x 18'	\$194.94

## Tarp Kit Replacement Parts



THT930



THT904



THT940



THT905



THT949



THT933

ITEM#	MFG#	Description	Price
THT904	3008010	Adapter shaft for tarp kit	\$8.95
THT905	3008182	Crank roller shaft	\$15.95
THT906	3008191	Spring roll pin, 5/16" x 1 7/8"	\$1.99
THT922	1411000	Bearing for tarp system	\$22.95
THT930	3009501	Detented tarp crank bracket	\$43.95
THT933	3009433	Detent lever for tarp roller	\$13.95
THT938	3009434	Extension spring for tarp kit	\$4.99
THT940	1411915	12T sprocket for tarp kit	\$14.95
THT941	3008176A	7" tarp crank handle assembly	\$26.95
THT949	3023812	Retention hub w/set screws	\$13.95
THT950	DTB102	Rear Anti-sail tarp retention	\$126.95

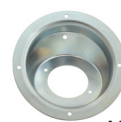
## Tarp Straps



- Industrial EPDM Rubber Tarp Strap
- Measurement is from hook to hook
- Made in the USA!

ITEM#	Description	1-9	10-19	20+
MTS701	13" tarp strap	\$2.49	\$2.39	\$2.29
MTS702	18" tarp strap	\$2.99	\$2.89	\$2.79
MTS703	24" tarp strap	\$3.49	\$3.39	\$3.29
MTS704	34" tarp strap	\$4.49	\$4.39	\$4.29

## Fuel Dishes



MAF12

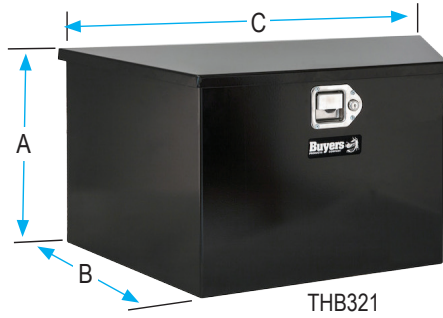


MAF13



MAF12	Fuel dish, 6.26" flange, 21° fill angle, zinc	\$11.95
MAF13	Fuel dish, 6.26" flange, 21° fill angle, stainless steel	\$23.95

## Trailer Tongue Tool Boxes



THB321



THB341



THB932

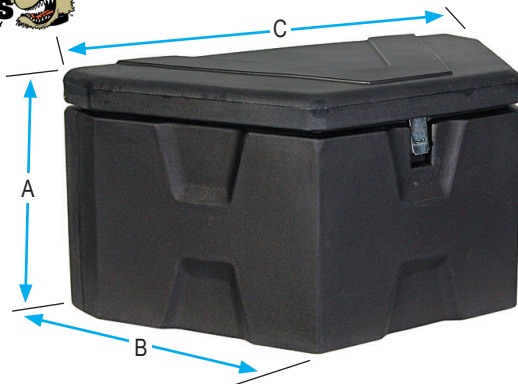


THB933

- Aluminum tread plate or smooth steel painted black
- Stainless steel paddle handle with lock
- Stainless steel or aluminum continuous hidden hinge

ITEM#	Style	A	B	C	Price
THB321	Black Steel	15	14½	34	\$379.95
THB341	Aluminum	15	14½	34	\$389.95
THB342	Aluminum	18½	15	49	\$455.95
THB932	Mini Tear Drop Latch, 4¾"H x 3¼"W				\$14.95
THB933	Striker Bracket for THB932				\$7.95

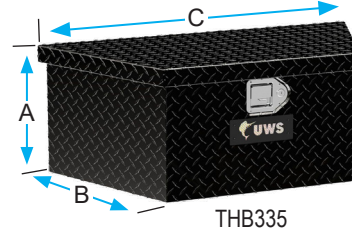
## Poly Tool Box



- Zinc Hasp
- Strong double panel lid
- Constructed of rotationally molded high-density polyethylene

ITEM#	Style	A	B	C	Price
THB367	Poly	18	19	36	\$162.95

## Trailer Tongue Tool Boxes



THB335

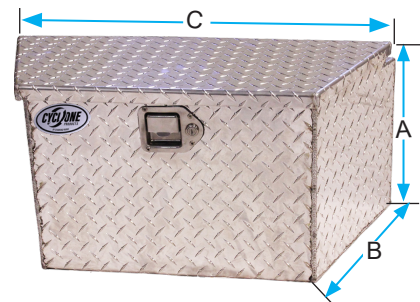


THB334

- Patented RigidCore foam-filled lid
- One piece tub holds heavy tools and cargo
- Stainless steel lock handle & MicroSeal gasket
- Self-opening 90 degree lid
- Assembled in USA
- Limited lifetime warranty (1-year finish, 1-year parts)
- THB334/335 - Low profile provides added clearance

ITEM#	Style	A	B	C	Price
THB334	Aluminum	13	17	34½	\$504.95
THB335	Black Aluminum	13	17	34½	\$630.95
THB336	Aluminum	22	18½	49½	\$651.95

## Trailer Tongue Tool Boxes



- Rugged Cyclone Series
- 0.125" thick treadplate aluminum
- Twice as thick aluminum as other popular brands
- Recessed hinge, open flat back
- Stainless Steel locking latch
- Weather seal
- Gas prop

ITEM#	Style	A	B	C	Price
THB345	Aluminum	14	14	30	\$539.95



## Under body Tool Boxes



THB921



THB922



THB196

- Smooth steel with black finish
- Diamond bright aluminum tread plate
- Rotating T-handle with lock
- Weather seal

ITEM#	Style	A	B	C	Price
THB116	Steel	14	12	18	\$296.95
THB117	Steel	14	12	24	\$302.95
THB127	Steel	14	16	24	\$302.95
THB144	Steel	15	13	30	\$362.95
THB137	Steel	18	18	24	\$331.95
THB138	Steel	18	18	30	\$369.95
THB139	Steel	18	18	36	\$416.95
THB1394	Steel	18	18	48	\$525.95
THB1396	Steel	18	18	60	\$627.95
THB216	Aluminum	14	12	18	\$359.95
THB217	Aluminum	14	12	24	\$372.95
THB227	Aluminum	14	16	24	\$404.95
THB237	Aluminum	18	18	24	\$448.95
THB238	Aluminum	18	18	30	\$479.95
THB239	Aluminum	18	18	36	\$538.95
THB921	Replacement latch, 5½" H x 4¾" W				\$33.95
THB922	Replacement/Upgrade latch, 6" H x 5⅞" W				\$45.95
THB196	Mounting Bracket, 24" x 24" L brackets, sold by the pair				\$139.95

## Tool Box Latch



- Corrosion-resistant stainless steel construction
- Includes installed lock and key set and gasket
- Cam adjusts from 1¼" to 2" for varying door thicknesses
- 4⅞" H x 4¾" W

THB902	T-Handle latch	\$23.95
--------	----------------	---------

## Straight Torsion Ramp Springs



TH9351

- Designed as a lift assist for trailer ramps
- 180° leg position
- TH925: Compares to Sure Trac ST9437L
- TH926: Compares to Sure Trac ST9437R
- Leg length is measured from the center of the coil

ITEM#	LH/RH	# of Coils	Legs length	Rod Diameter	Coil ID	Shaft Size	Price
TH925	LH	5	3"	.312"	1.2"	1"	\$19.95
TH926	RH	5	3"	.312"	1.2"	1"	\$19.95
TH9331	LH	11	6"	.437"	1.2"	1"	\$19.95
TH9332	RH	11	6"	.437"	1.2"	1"	\$19.95
TH9339	LH	7	5"	.468"	1.7"	1.5"	\$19.95
TH9340	RH	7	5"	.468"	1.7"	1.5"	\$19.95
TH9341	LH	7	6"	.468"	1.7"	1.5"	\$19.95
TH9342	RH	7	6"	.468"	1.7"	1.5"	\$19.95
TH9343	LH	7	8"	.468"	1.7"	1.5"	\$19.95
TH9344	RH	7	8"	.468"	1.7"	1.5"	\$19.95
TH9351	LH	7	8"	.5"	1.7"	1.5"	\$21.95
TH9352	RH	7	8"	.5"	1.7"	1.5"	\$21.95
TH9355	LH	7	8"	.5"	2.2"	2"	\$23.95
TH9356	RH	7	8"	.5"	2.2"	2"	\$23.95

## Angled Torsion Ramp Springs



- Designed as a lift assist for trailer ramps
- 152° leg position
- Leg length is measured from the center of the coil

ITEM#	LH/RH	# of Coils	Legs length	Rod Diameter	Coil ID	Shaft Size	Price
TH921	LH	7¾	5"	.468"	1.95"	1.75"	\$26.95
TH922	RH	7¾	5"	.468"	1.95"	1.75"	\$26.95

## Double Torsion Ramp Spring



- Designed as a lift assist for trailer ramps
- 132° leg position
- Leg length is measured from the center of the coil

ITEM#	# of Coils	Legs length	Rod Diameter	Coil ID	Shaft Size	Price
TH9361	12¾	5.5"	.375"	1.65"	1.5"	\$59.95



## Enclosed Trailer Ramp Springs

**New!**



TH9527



TH9532

TH9536

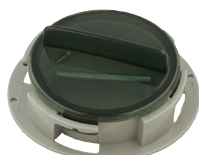


TH9538

- Complete system is custom designed for enclosed trailers
- Kits include all necessary parts & components except mounting bolts

TH9520	Spring Kit, Single, 66" wide, 80 lb door	\$139. <sup>95</sup>
TH9522	Spring Kit, Single, 77.5" wide, 80 lb door	\$149. <sup>95</sup>
TH9524	Spring Kit, Dual, 81" wide, 120 lb door	\$169. <sup>95</sup>
TH9526	Spring Kit, Dual, 96" wide, 160 lb door	\$179. <sup>95</sup>
TH9527	Spring Kit, Dual, 96" wide, 250 lb door	\$319. <sup>95</sup>
TH9529	Mounting Kit, Includes bracket, bearing & adapter	\$29. <sup>95</sup>
TH9530	Pair of Ramp Door Cables, 110" long	\$21. <sup>95</sup>
TH9532	Pair of Ramp Door Cables, 150" long	\$19. <sup>95</sup>
TH9534	Pair of Ramp Door Cables, 174" long	\$23. <sup>95</sup>
TH9536	Cable Kit, 150" Pair of cables with hardware	\$23. <sup>95</sup>
TH9538	Cable Drum, 5", Pair	\$29. <sup>95</sup>

## Document Holder

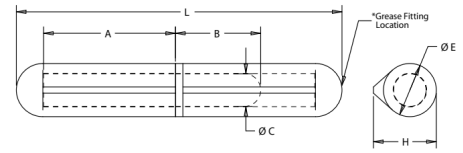


HAD007 Twist Lock Document Holder \$12.<sup>95</sup>

## Weld-On Bullet Hinges

**Buyers**  
PRODUCTS COMPANY

**New!**

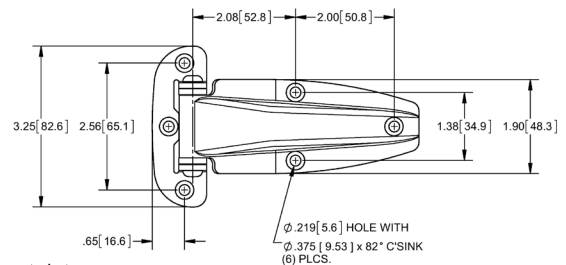


TH9830

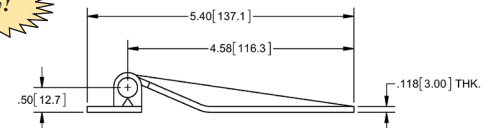
- Constructed from heavy duty steel with brass pin and bushing
- Includes grease fitting

ITEM#	Hinge Length (L)	Thickness (H)	Diameter (E)	Pin Length (A)	Pin Length (B)	Pin Diameter (C)	Price
TH9830	3.15"	0.61"	0.51"	1.28"	0.83"	0.32"	\$4. <sup>29</sup>
TH9831	3.94"	0.77"	0.63"	1.65"	1.16"	0.39"	\$6. <sup>49</sup>
TH9832	4.72"	0.77"	0.63"	2.01"	1.26"	0.39"	\$7. <sup>69</sup>
TH9833	5.91"	0.98"	0.79"	2.48"	1.57"	0.51"	\$11. <sup>95</sup>

## Stamped Flush Hinge



**New!**



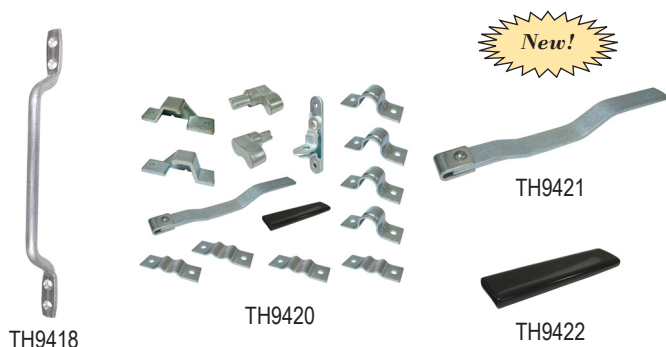
TH9459 Stainless Steel stamped flush hinge \$13.<sup>95</sup>

## Greaseable Hinge Strap



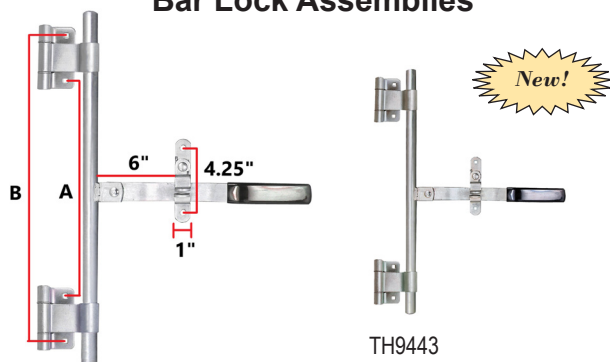
TH980 Formed Hinge Strap with grease zerk \$13.<sup>95</sup>

## Trailer Door Hardware



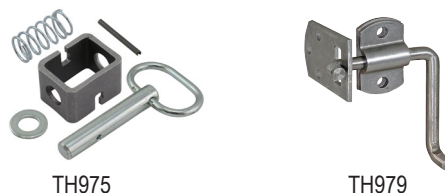
TH9418	Aluminum door pull handle, 13.38" long	\$10.95
TH9420	Bar Lock Kit, 2PT Cam, Zinc	\$46.95
TH9430	Aluminum Cam Lock Kit, 2PT Cam	\$89.95
TH9421	Bar Lock Handle, Zinc, handle grip sold separately	\$13.95
TH9422	Rubber Grip for Bar Lock Handle	\$2.99
TH9424	Top Lug, Zinc	\$5.99
TH9425	Bottom Lug, Zinc	\$5.99
TH9426	Top Keeper, Zinc	\$6.69
TH9427	Bottom Keeper, Zinc	\$5.79
TH9450	Pivot Hinge, Fixed, Zinc	\$10.95
TH9423	Hasp Keeper, Zinc, 4.25"	\$8.49

## Bar Lock Assemblies



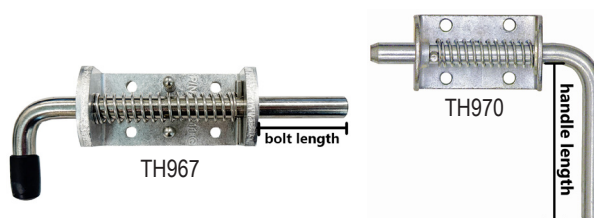
ITEM#	Description	A	B	Price
TH9443	Bar Lock Assembly, Steel, 36"	25¼"	31¾"	\$47.95
TH9445	Bar Lock Assembly, Steel, 45"	34¾"	40⅞"	\$56.95

## Trailer Latches



TH975	Weld-on spring latch with 5/8" pin	\$10.95
TH979	Corner security latch set, zinc	\$13.95

## Gate Hardware



•TH967: Aluminum base, SS pin

ITEM#	Housing	Mounting holes	Handle Length	Bolt Length	Price
TH967	1⅞" x 3⅝"	1" x 1⅜"	1½"	1¾"	\$12.95
TH970	1¾" x 3"	1¼" x 1½"	3¾"	1"	\$10.95
TH971	1½" x 3"	1¼" x 1½"	2¾"	1"	\$6.99
TH972	2" x 3"	1¼" x 1½"	3½"	1"	\$12.95

## Aluminum Door Holdbacks



- (2) piece holdback for swinging doors and lids
- Long arm is spring loaded to prevent rattling
- Includes both keeper and holder
- Pins are stainless steel

TH9472	2" aluminum door holdback & keeper	\$10.95
TH9474	4" aluminum door holdback & keeper	\$11.95
TH9476	6" aluminum door holdback & keeper	\$12.95
TH9479	10" aluminum door holdback & keeper	\$13.95

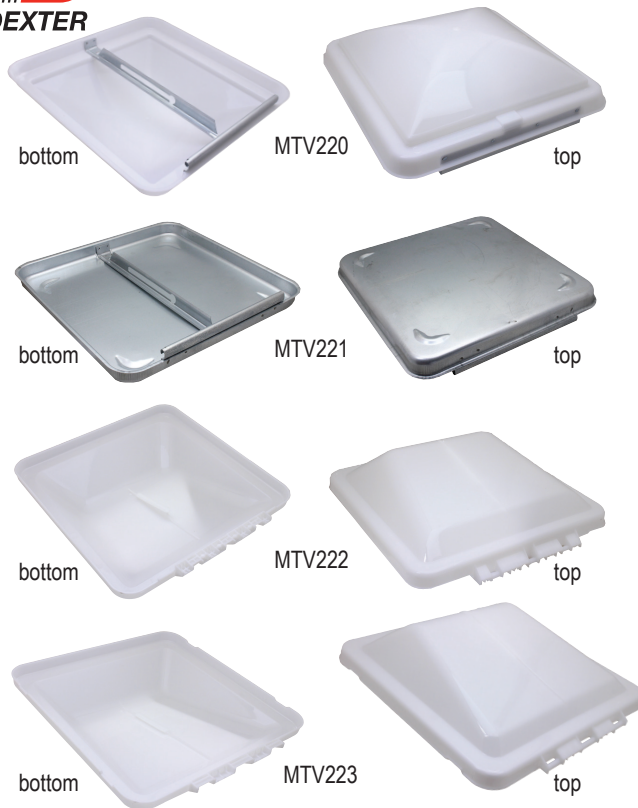
## Ventadome Roof Vents



- MTV322 utilizes a new E-Z lift handle with 10 locking positions for fast opening and closing
- Fit 14¼" x 14¼" openings

MTV230	Turn-knob vent kit, wedge shaped cover	\$64.95
MTV322	New-style E-Z lift vent kit	\$74.95

## Replacement Ventadome Covers



MTV220	Poly, old-style dome-shaped cover	\$28.95
MTV221	Metal, upgrade for old-style dome-shaped cover	\$31.95
MTV222	Poly, wedge-shaped cover (not interchangeable with dome-shape), fits MTV230	\$36.95
MTV223	Poly, fits new E-Z Lift Ventadome MTV322	\$42.95

## Trailer Vents



MTV270



MTV275

MTV270	Aluminum vent, 7.8" diameter	\$9.99
MTV275	Black plastic vent cap set	\$7.99

## Round Rubber Bumpers



TH901



TH902

- Protect your trailer from damage from door handles, latches, etc.
- Cushion between ground and loading ramp or lift gate.

TH901	1" diameter, rubber dome top bumper	\$2.49
TH902	2½" diameter, round rubber bumper, 1" thick	\$4.99

## Floor Board Screws



THF230



THF250

- Type F thread cutting
- ¼" screws require pre-drilled hole size 7/32"
- 5/16" screws require pre-drilled hole size 9/32"
- THFC230: Gold Ruspert coated for use with treated lumber

ITEM#	Description	1-99	100+
THF234	¼" x 1½" floorboard screw T30 Torx	\$0.49	\$0.39
THF231	¼" x 2¼" floorboard screw T30 Torx	\$0.49	\$0.39
THF230	¼" x 2½" floorboard screw T27 Torx	\$0.40	\$0.30
THFC230	¼" x 2½" floorboard screw T30 Torx	\$0.49	\$0.39
THF250	5/16" x 2½" floorboard screw T40 Torx	\$0.49	\$0.39
THF253	5/16" x 3" floorboard screw T40 Torx	\$0.59	\$0.49

## Floor Board Screws



THF240



THF242

- Self tapping
- Gold Ruspert coated for use with treated lumber

ITEM#	Description	1-99	100+
THF240	¼" x 2¾" floorboard screw T30 Torx	\$0.49	\$0.39
THF242	¼" x 3¾" floorboard screw T30 Torx	\$0.49	\$0.39



## S-Hook Safety Chains

**STRONG & RELIABLE**  
**RAM**



HAC448



HAC1



HAC12

- Safety chain ratings are per pair but sold individually
- Length = overall length including the hook

ITEM#	Description	Rating	Grade	Price
HAC420	¼" x 27", 1 S-hook w/ latch	5,200	GR30	\$7.09
HAC424	¼" x 36", 1 S-hook w/ latch	5,200	GR30	\$9.29
HAC448	¼" x 48", 2 S-hooks w/ latch	5,200	GR30	\$13.95
HAC454	¼" x 54", 2 S-hooks w/ latch	5,200	GR30	\$14.19
HAC1	S-hook only	5,000		\$1.99
HAC12	S-hook with latch	5,000		\$3.99

## Slip-Hook Safety Chains

**STRONG & RELIABLE**  
**RAM**



- Safety chain ratings are per pair but sold individually
- Length = overall length including the hook

ITEM#	Description	Rating	Grade	Price
HAC66	¼" x 30"	7,800	GR43	\$10.49
HAC75	⅝" x 35"	11,700	GR43	\$17.95
HAC77	¼" x 36"	12,600	GR70	\$12.95
HAC80	⅜" x 35"	16,200	GR43	\$19.95
HAC76	⅝" x 37"	18,800	GR70	\$17.79
HAC86	⅜" x 35"	26,400	GR70	\$22.95
HAC96	½" x 42"	45,200	GR70	\$38.95

## Coiled Safety Cables

**Hi-Value**  
**BROPHY**  
Products



HAC429/HAC427

- Black HD PVC coated stranded cable
- Safety cable ratings are per pair but sold individually

ITEM#	Description	Breaking strength	Price
HAC425	36" S-hook with safety latch	7,000	\$15.95
HAC429	48" Clevis Hook w/safety latch	10,000	\$21.95
HAC427	40" Clevis Hook w/safety latch	12,000	\$30.95

## Twin Clevis

- Safely connect two pieces of chain
- Not for overhead lifting or towing



ITEM#	Size	WLL	Grade	Price
THH117	⅝"	4,700	70	\$3.99
THH118	⅜"	6,600	70	\$4.99

## Threaded Links



HAQL516

- Threaded links are not DOT approved for safety chain use.

ITEM#	Description	MBS	WLL	Price
HAQL14	¼" threaded link	5,200	1,300	\$1.99
HAQL516	⅝" threaded link	7,040	1,760	\$1.89
HAQL38	⅜" threaded link	10,560	2,640	\$2.99
HAQL12	½" threaded link	13,200	3,300	\$4.99
HAQL58	⅝" threaded link	16,000	8,000	\$10.95

## Snap Hook



ITEM#	Description	Price
HAQSL38	⅜" Snap hook, 2,000 MBS	\$2.69

## Safety Chain Bar



- Weld to trailer frame to securely hold safety chain
- HAC142: ⅜" diameter round bar
- HAC144: ½" diameter round bar

ITEM#	Description	Price
HAC142	Fits through link of ¼" grade 30 and larger chains	\$2.99
HAC144	Fits through link of ⅝" grade 70 and larger chains	\$2.99

## Safety Chain Retainer

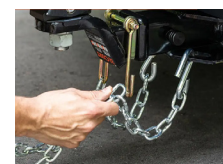


- Forged steel
- Easier chain replacement
- No masking chains when painting

HAC146	Weld-on Safety Chain Retainer for ⅝" chain	\$5.99
HAC148	Weld-on Safety Chain Retainer for ⅜" chain	\$6.99
HAC149	Weld-on Safety Chain Retainer for ½" chain	\$9.99

## Safety Chain Hanger Bracket

**CURT**



- Requires ⅝" clearance on the shank between receiver collar & accessory

HAC150	Clamp on, fits 2" shank, zinc finish	\$12.95
--------	--------------------------------------	---------

## Clevis Grab Hooks



- Not intended for overhead lifting

ITEM#	Size	WLL	Grade	Price
THH132	5/16"	5,400	70	\$5.65
THH134	3/8"	6,600	70	\$6.79
THH136	1/2"	11,300	70	\$15.95

## Clevis Slip Hook with Latch



- Not intended for overhead lifting

ITEM#	Size	MBS	WLL	Grade	Price
HAC70	1/4"	7,800	2,600	70	\$5.49
HAC72	5/16"	18,800	5,400	70	\$6.99
HAC73	3/8"	26,400	6,600	70	\$10.69
HAC74	1/2"	33,900	11,300	70	\$20.95

## Weld-on Grab Hooks



- Not for towing or overhead lifting

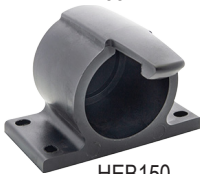
ITEM#	Size	WLL	Grade	Price
THH126	5/16"	5,400	70	\$3.99
THH128	3/8"	6,600	70	\$5.99
THH129	1/2"	11,300	70	\$10.99



## Chain Buddy



HEB155



HEB150



- HEB155: 7 RV Plug Holder (HEB150) not included
- HEB150 can be used with HEB155

HEB155	Safety chain holder w/ place to mount 7RV Holder	\$9.99
HEB150	7 RV Plug Holder	\$8.95

## Binder Chain



- G70 grab hooks on each end
- Meets or exceeds all DOT regulations
- Not for overhead lifting or towing

ITEM#	Size	WLL	Grade	Price
THC160	5/16" x 8'	4,700	G70	\$33.95
THC161	5/16" x 10'	4,700	G70	\$39.95
THC162	5/16" x 12'	4,700	G70	\$46.95
THC163	5/16" x 16'	4,700	G70	\$56.95
THC165	5/16" x 20'	4,700	G70	\$68.95
THC168	5/16" x 25'	4,700	G70	\$90.95
THC170	3/8" x 8'	6,600	G70	\$43.95
THC171	3/8" x 10'	6,600	G70	\$52.95
THC172	3/8" x 12'	6,600	G70	\$60.95
THC173	3/8" x 16'	6,600	G70	\$76.95
THC175	3/8" x 20'	6,600	G70	\$91.95
THC178	3/8" x 25'	6,600	G70	\$115.95
THC181	1/2" x 10'	11,300	G70	\$95.95
THC183	1/2" x 16'	11,300	G70	\$138.95
THC185	1/2" x 20'	11,300	G70	\$166.95

## Bulk Chain



- Transport G70 chain
- Meets or exceeds all DOT regulations
- Not for overhead lifting or towing

THC282	5/16"	4,700 WLL	price per foot	\$5.32
THC284	3/8"	6,600 WLL	price per foot	\$7.24
THC286	1/2"	11,300 WLL	price per foot	\$12.12

## Chain Tensioner



THC234

- Folding handle for ease of storage!
- 2 way ratcheting, plus free spin
- Can be locked with a padlock for additional load security
- Load binders WLL must be equal to or greater than WLL of chain

ITEM#	Size	WLL	Price
THC232	5/16" - 3/8"	7,200	\$59.95
THC234	3/8" - 1/2"	12,000	\$59.95

## Chain Binders



- Quick and easy to operate
- Standard over-center lever chain binder
- Load binders working load limit must be equal to or greater than working load limit of chain

ITEM#	Size	WLL	1-9	10-19	20+
THC122	5/16" - 3/8"	6,600	\$41.29	\$40.29	\$39.29
THC124	3/8" - 1/2"	9,200	\$58.95	\$57.95	\$56.95

## Ratcheting Chain Binders



- Easy to operate
- Lock securely when binding or releasing
- No extra tools necessary
- Load binders working load limit must be equal to or greater than working load limit of chain

ITEM#	Size	WLL	1-9	10-19	20+
THC220	5/16" - 3/8"	5,400	\$34.95	\$33.95	\$32.95
THC222	5/16" - 3/8"	6,600	\$43.95	\$42.95	\$41.95
THC224	3/8" - 1/2"	9,200	\$44.95	\$43.95	\$42.95
THC226	1/2" - 5/8"	13,000	\$59.95	\$58.95	\$56.95

## Ratcheting Chain Binder



- Easy to operate
- Lock securely when binding or releasing
- No extra tools necessary
- Load binders working load limit must be equal to or greater than working load limit of chain

ITEM#	Size	WLL	Price
THC223	5/16" - 3/8"	6,600	\$39.95

## Weld-On D-Rings



- Weldable mounting bracket is included with each D-Ring.
- MBS- minimum breaking strength      • WLL- working load limit
- THR111- Ring is bent at 55° angle to extend from mounting surface

ITEM#	Description	MBS	WLL	Price
THR138	3/8" D-Ring	n/a	3,000	\$6.99
THR112	1/2" D-Ring	12,000	4,000	\$5.99
THR158	5/8" D-Ring	18,000	6,000	\$8.99
THR134	3/4" D-Ring	26,000	9,000	\$13.99
THR110	1" D-Ring	46,000	15,000	\$19.95
THR111	1" angled D-Ring	46,760	15,586	\$21.95

## Bolt-On D-Rings



- These rings provide an easy anchor for tie-downs.

ITEM#	Description	MBS	WLL	Price
THR214	1/4" D-ring	1,200	400	\$1.69
THR2141	1/4" D-ring	1,500	500	\$1.69
THR238	3/8" D-ring	5,000	1,600	\$3.99
THR239	3/8" D-ring, Stainless	5,000	1,600	\$10.95
THR212	1/2" D-ring	11,780	4,080	\$6.39

## Stake Pocket Anchors



- TH991 not compatible with stake pocket anchors

ITEM#	Description	Price
TH991	1 1/2"x3" bolt-on stake pocket, 1/8" thick, 2 1/2" tall	\$7.99
TH990	1 1/8"x3 1/2" weld-on stake pocket, 1/8" thick, 3" tall	\$4.99
TH992	1 1/4"x3 1/2" weld-on stake pocket, 1/4" thick, 4" tall	\$12.95
TH998	3 1/2" stake pocket tie down, bent pin, 3/8" ring, 1,600 lb WLL	\$25.95
TH997	3 1/2" heavy duty stake pocket tie down, bent pin, 1/2" ring, 4,000 lb WLL	\$18.95
TH999	3 1/2" heavy duty stake pocket tie down, pin w/ handle, 1/2" ring, 4,000 lb WLL	\$25.95
TH995	3 1/2" heavy duty stake pocket tie down, spring loaded clip 5/8" ring, 6,000 lb WLL	\$39.95



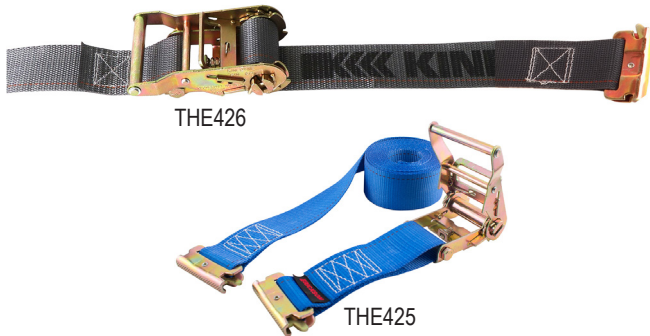
## Anchor Points



•These rings provide an easy anchor for tie-downs.

ITEM#	Description	MBS	WLL	Price
THR315	Swivel rope ring kit	6k	2,000	\$28.95
THR914	Backing Plate for THR318			\$5.99
THR318	Recessed tie-down	6k	2,000	\$5.99
THR310	Rope Ring	1.5k	500	\$4.49

## E-track Ratchet Straps



•THE425/4252: 3,500 lb breaking strength/1,165 lb WLL

THE426	2"x16' Ratchet Strap with 44" lead	3,000 lb breaking strength/1,000 lb WLL	\$12.95
THE425	2"x16' Ratchet Strap with 8" lead		\$16.95
THE4252	2"x20' Ratchet Strap with 8" lead		\$18.95

## Corner Protector



•4" wide ID

•Protects straps & cargo

THS930	Plastic Webbing Protector	\$3.19
--------	---------------------------	--------

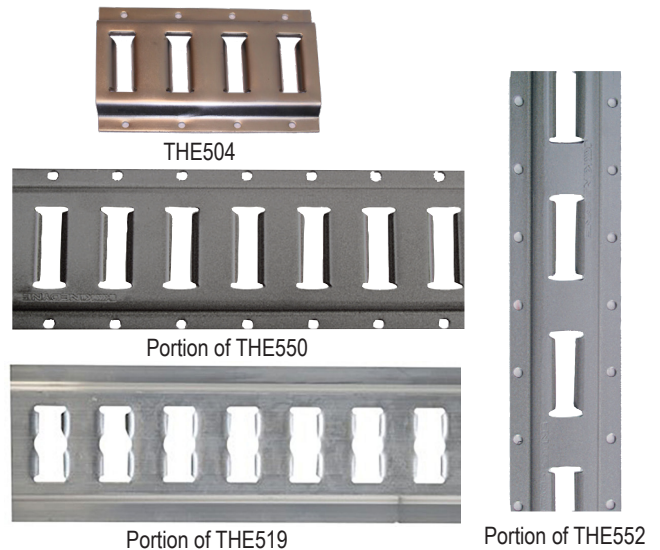
## E-track Mounting Screws



•Zinc-coated screws commonly used to mount e-track

ITEM#	Description	1-99	100+
THF220	1/4" x 1 1/4" self-drilling, 3/8" hex head	\$0.49	\$0.38
THF222	1/4" x 1 1/2" self-drilling, 3/8" hex head	\$0.59	\$0.47

## E-track



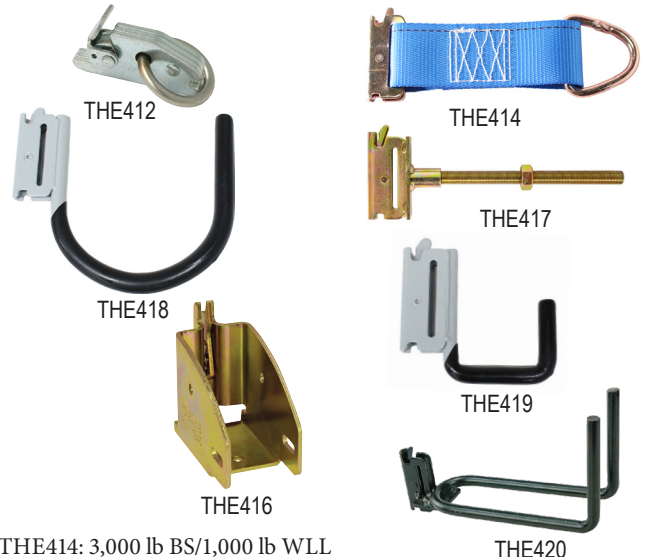
•THE519: Aluminum, no pre-drilled mounting holes

•8-10' sections LTL freight extra, Zone A/B/C, \$99/\$149/199, see pg. 202

•5' sections can be shipped via UPS ground for \$10 charge per order

ITEM#	Orientation	Length	1-5	6-11	12+
THE504	Horizontal	4 slots	\$8.99	\$8.63	\$8.27
THE550	Horizontal	5 feet	\$23.95	\$22.99	\$22.05
THE510	Horizontal	10 feet	\$39.95	\$38.95	\$37.95
THE519	Horizontal	10 feet aluminum	\$71.95	\$70.95	\$69.95
THE552	Vertical	5 feet	\$27.95	\$26.95	\$25.95
THE513	Vertical	8 feet	\$44.95	\$43.95	\$42.95
THE512	Vertical	10 feet	\$49.95	\$48.95	\$47.95

## E-track Accessories

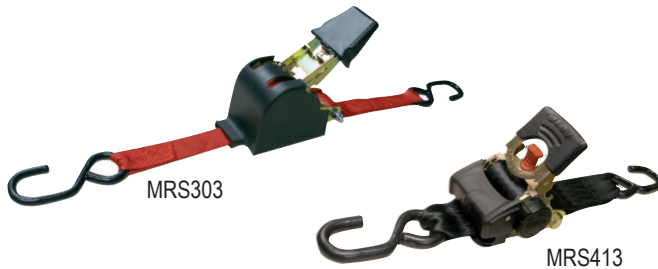


•THE414: 3,000 lb BS/1,000 lb WLL

•THE416: Weight limit dependent on lumber used

THE412	Tie-off Ring, 6,000 lb breaking strength	\$6.99
THE414	2"x6" Strap with ring	\$4.99
THE416	Board Holder for 2x4 or 2x6 lumber	\$7.99
THE417	E-track Mounted Spare Tire Carrier	\$10.95
THE418	J-Hook, 4 1/4" round	\$9.99
THE419	J-Hook, 2" square	\$6.99
THE420	Double-L Hook, 7"L x 4 1/2"H, 1 1/4" between prongs	\$10.95

## 1" Retractable Ratchet Straps



- Retractable ratchet automatically winds unused webbing and stores it in the center housing so you have no straps blowing in the wind.
- MRS303- 1,200 lb breaking strength, 400 lb WLL
- MRS413- 1,500 lb breaking strength, 500 lb WLL

ITEM#	Description	1-3	4-7	8+
MRS303	1" x 10', 2 pack	\$29.95	\$28.95	\$27.95
MRS413	1" x 6', 2 pack	\$29.95	\$28.95	\$27.95

## 1" Ratchet Packs



- Breaking strength is typically 3 times the amount of working load limit

ITEM#	Description	MBS	WLL	1-3	4-7	8+
THS682	1" x 14' ratchet strap	2 pack	500WLL	\$12.95		
THS684	1" x 14' ratchet strap	4 pack	500WLL	\$23.95		
THS674	1" x 16' ratchet strap	4 pack	500WLL	\$41.59		

## High Strength Ratchet Straps



- Breaking strength is typically 3 times the amount of working load limit

ITEM#	Description	Price
THS685	1.25" x 14' ratchet strap, 1,000 lb WLL, round S hook	\$14.95
THS680	1.5" x 14' ratchet strap, 1,667 lb WLL, double J hook	\$14.95
THS671	1" x 15' ratchet strap, 2 pk, 1,100 lb WLL, round S hook	\$36.95
THS670	1.5" x 14' ratchet strap, 1,667 lb WLL, double J hook	\$26.95

## 2" Retractable Ratchet Straps



- Retractable ratchet automatically rewinds strap for storage
- Extra webbing stays on reel; no loose ends flapping in the wind
- MRS320- Permanently bolts to trailer, S-hook on end of strap
- MRS416- S-hook on both ends, can be permanently bolted
- MRS415- S-hook on both ends, can be permanently bolted with supplied bolt, large easy-grip ratchet handle and release handle

ITEM#	Description	MBS	WLL	1-3	4-7	8+
MRS320	2" x 5½', pack of 2	4,000	1,333	\$49.95	\$48.95	\$47.95
MRS416	2" x 10', pack of 2	3,300	1,000	\$52.95	\$51.95	\$50.95
MRS415	2" x 10', each	3,000	1,000	\$54.95	\$52.75	\$50.55

## 2" Standard Ratchet Straps

**DOLECO USA**



- THS218: Standard handle
- THS216/219/215: Long handle
- 3,333 lb WLL

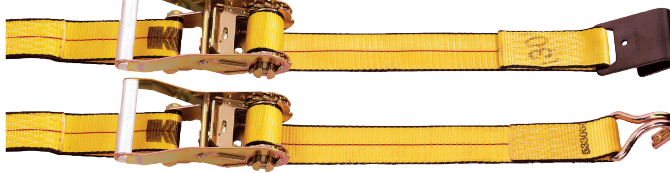
ITEM#	Description	1-9	10-19	20+
THS222	2" x 16' Flat Hook	\$17.95	\$16.95	\$15.95
THS223	2" x 16' Wire Hook	\$17.95	\$16.95	\$15.95
THS218	2" x 27' Flat Hook	\$17.95	\$16.95	\$15.95
THS216	2" x 27' Flat Hook	\$18.95	\$17.95	\$16.95
THS219	2" x 27' Wire Hook	\$17.95	\$16.95	\$15.95
THS215	2" x 30' Flat Hook	\$18.95	\$17.95	\$16.95



# Ratchet Straps & Winders



## 2" Standard Ratchet Straps



- Kinedyne's standard wide handle
- THS226/THS236 have Kinedyne's long wide handle
- 10,000 lb breaking strength / 3,335 lb WLL

ITEM#	Description	1-7	8-15	16+
THS228	2" x 27' Flat Hook	\$20.95	\$19.95	\$18.95
THS229	2" x 27' J-Hook	\$20.95	\$19.95	\$18.95
ITEM#	Description	1-9	10-19	20+
THS226	2" x 27' Flat Hook	\$25.95	\$24.95	\$23.95
THS236	2" x 30' Flat Hook	\$25.95	\$24.95	\$23.95
THS236BU	2" x 30' Flat Hook, Blue	\$17.95	\$16.95	\$15.95
THS237	2" x 30' J-hook	\$20.95	\$19.95	\$18.95
THS246	2" x 40' Flat Hook	\$45.95	\$44.95	\$43.95
THS247	2" x 40' J-Hook	\$41.95	\$40.95	\$39.95

## 2" Rhino Max™ Ratchet Straps



- 30% thicker than standard straps
- Tougher surface than standard straps
- 30% more tensile strength after severe abrasion
- Exceeds industry weight ratings! 12,000 lb BS/4,000 lb WLL

ITEM#	Description	1-7	8-15	16+
THS224	2" x 27' Flat Hook	\$38.95	\$37.95	\$36.95
THS225	2" x 27' J-Hook	\$49.95	\$48.95	\$47.95

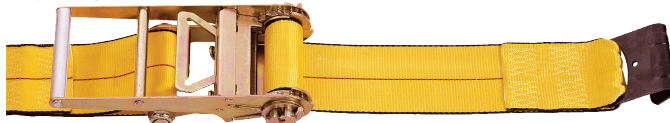
## 3" Ratchet Straps



- 3" x 30'

ITEM#	MBS	WLL	Hook	1-3	4-7	8+
THS336	16,200	5,400	Flat	\$64.95	\$63.95	\$62.95
THS337	16,200	5,400	Wire	\$89.95	\$88.95	\$87.95

## 4" Ratchet Strap



- 4" x 30'

ITEM#	MBS	WLL	Hook	1-3	4-7	8+
THS436	16,200	5,400	Flat	\$61.95	\$60.95	\$59.95

## Strap Winders



THS467



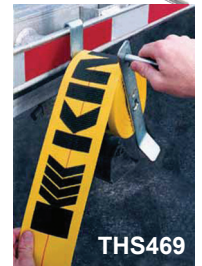
THS467



THS469



THS468



THS469

- THS467- Quickly winds your straps back onto the winch mandrel
- THS468- Clamps to trailer side rail & quickly winds up 2"-4" straps
- THS469- Fits onto side rail of trailer & winds up 2"-4" straps in either direction.

THS467	Kwik Winder	\$25.95
THS468	Standard Strap Winder	\$37.95
THS469	Premium Strap Winder	\$36.95

## Slack Sack



Stores excess 2" webbing in the bag with the ratchet while in use or in storage. Made of durable, water resistant nylon pack cloth.

MTSS	Slack Sack	\$6.95
------	------------	--------

## Retract-A-Bar



- Hold loads in standard pickups, large freight trailers, etc.
- Three width adjustment settings: 54"-68", 68"-82", 92"-107"

MALB10	Retract-A-Bar	\$59.95
--------	---------------	---------

**NOTE:**  
Straps and chains not intended  
for overhead hoisting.



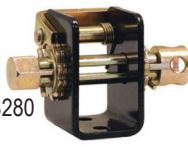
# Winch Binders & Straps



## Winches



THS480



THS280

THS280/282: Bolt-on or weld-on

ITEM#	Width	MBS	WLL	Description	Price
THS280	2"	10,000	3,333	Pry bar or hex drive, Buyers	\$22.95
THS282	2"	10,000	3,335	Hex drive, Kinedyne	\$14.95
THS480	4"	20,000	6,670	Weld-on, Standard	\$19.95
THS482	4"	20,000	6,670	Weld-on, Storable	\$29.95
THS484	4"	20,000	6,670	Weld-on, Lo-Pro	\$19.95

## Winch Bars



THS489



THS487

- Knurled non-slip handle and tapered carbon-steel nose piece
- Does not work with THS280

ITEM#	Width	MBS	WLL	Description	Price
THS489				Standard Winch Bar, Painted	\$16.95
THS487				Combination Winch Bar, Box End, Chrome	\$38.95

## Sliding Winch Binder & Track



THS472



THS470

- THS472/473- Kinedyne brand
- THS470- Buyers brand

THS472	4" Winch, Sliding, Storable, 6,670WLL	\$28.95
THS473	4" Winch, Sliding, Standard, 6,670WLL	\$24.95
THS470	Sliding Winch Track, 6' long, raw Freight extra to zone A/B/C = \$10/\$15/\$20	\$95.95

## Aluminum Sliding Winch Track

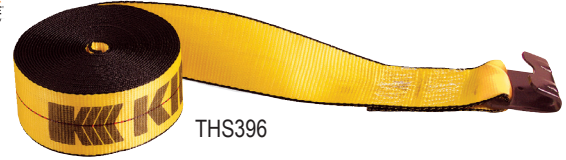


THS471

- 6' long, 4.93" wide, .3" wall thickness

THS471	Aluminum Sliding Winch Track Freight extra to zone A/B/C = \$10/\$15/\$20	\$149.95
--------	--	----------

## Flat Hook Winch Straps



THS396

- THS494: 30% thicker strap & better strength after severe abrasion

ITEM#	Description	WLL	Size	1-9	10-19	20+
THS296	Gold/black	3,335	2" x 27'	\$10.95	\$9.95	\$8.95
THS396	Gold/black	5,400	3" x 30'	\$29.95	\$28.95	\$27.95
THS496	Gold/black	5,400	4" x 30'	\$15.95	\$14.95	\$13.95
THS494	HD Grey Rhino	6,670	4" x 30'	\$29.95	\$28.95	\$27.95
THS498	Gold/black	5,400	4" x 40'	\$26.95	\$25.95	\$24.95

## Flat Hook Winch Strap



ITEM#	Description	WLL	Size	1-9	10-19	20+
THS495	Yellow	5,400	4" x 30'	\$13.95	\$12.95	\$11.95

## Winch



ITEM#	Width	WLL	Description	Price
THS481	4"	5,500	Weld-on, Standard	\$19.95

## Sliding Winch Binder & Track



THS483



THS475

THS483	4" Winch, Sliding, Storable, 5,500WLL	\$26.95
THS475	Sliding Winch Track, 6' long, steel plate Freight extra to zone A/B/C = \$10/\$15/\$20	\$89.95

## Wheel Tie Downs

**ERICKSON**  
MANUFACTURING LTD.



MRST22



MRST22

**B/A**  
PRODUCTS CO.



THS832



**KINEDYNE**  
The Cargo Control People!

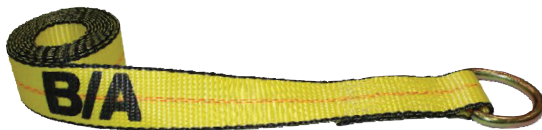


THS822

- Make hauling safe & secure
- MRST22- 2" cam buckle allows webbing to be shortened or lengthened. Heavy 3" web over the top of the tire from one side to the other. Fits tires with overall height of 14" - 29"
- THS832- Swivel J-hook rolling idler style with tire grippers and ratchet
- THS822- Wire J-hook style with tire grippers and ratchet

ITEM#	Description	1-3	4-7	8+
MRST22	Adjustable Wheel Tie Down, 3300 WLL	\$43.95	\$42.95	\$41.95
THS832	Rolling Idler Wheel Tie Down	\$45.95	\$44.95	\$43.95
THS822	Wire Hook Wheel Tie Down	\$27.95	\$26.95	\$25.95
THS833	Replacement strap only for THS832	\$34.95	\$33.95	\$32.95

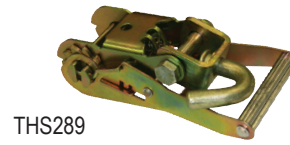
## 2" D-Ring Strap



- 3,330 lb working load
- Simply create a lasso through the wheel or around the axle

ITEM#	Description	1-5	6-11	12+
THS815	2" x 8' with D-Ring	\$14.95	\$13.95	\$12.95
THS816	2" x 14' with D-Ring	\$25.95	\$24.95	\$23.95

## 2" Finger Hook Ratchet



THS289



THS839

- 2" Wide Ratchet with Forged Finger Hook

THS289	2" Ratchet with Forged Finger Hook	\$33.95
THS839	Finger hook only, 1½" wide	\$12.95

## Roll Back Tie Down Kit



- Complete system includes 4 each of 14' straps with chain, short straps with sewn eyes and ratchets with chain.

THS886	Roll Back Tie Down Kit	\$239.95
--------	------------------------	----------

## 2" Ratchet Strap with Axle Loop

Hi-Valu  
**BROPHY**  
Products



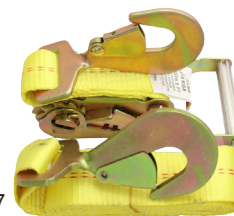
MRS208

- 10,000 lb breaking strength/ 3,335 lb WLL
- Adjustable loop built into strap for quick-snap hookup to any axle

ITEM#	Description	1-3	4-7	8+
MRS208	2"x10' Ratcheting Axle Strap	\$35.95	\$34.95	\$33.95

## 2" Ratchet Strap and Axle Strap

Hi-Valu  
**BROPHY**  
Products



MRS207

**ERICKSON**  
MANUFACTURING LTD.



MRS24

- 10,000 lb breaking strength, 3,335 lb WLL

ITEM#	Description	1-3	4-7	8+
MRS207	2" x 8' with Snap Hook	\$29.95	\$28.95	\$27.95
MRS24	Axle Strap, 2" x 24"	\$9.99	\$9.99	\$9.19